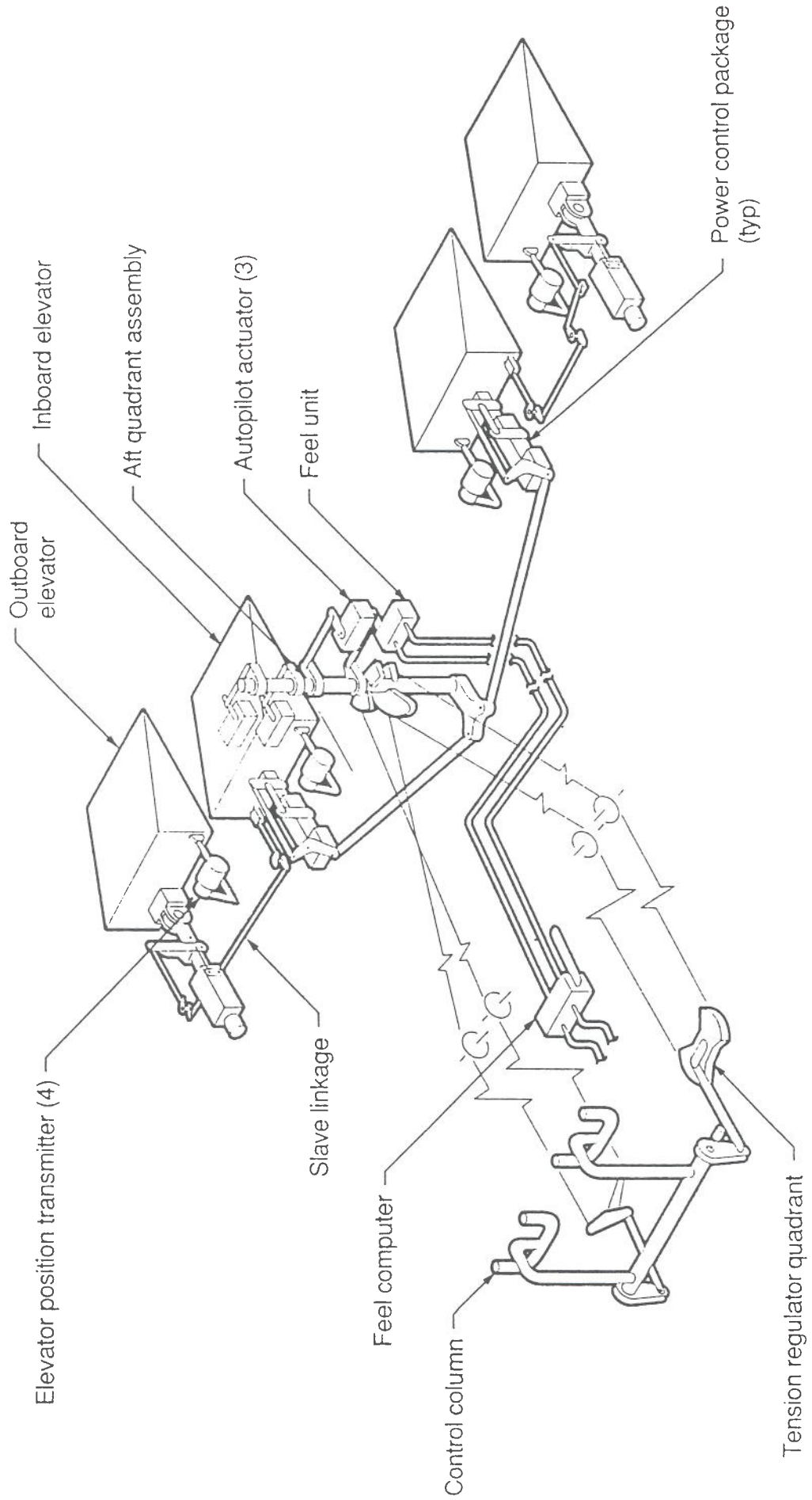
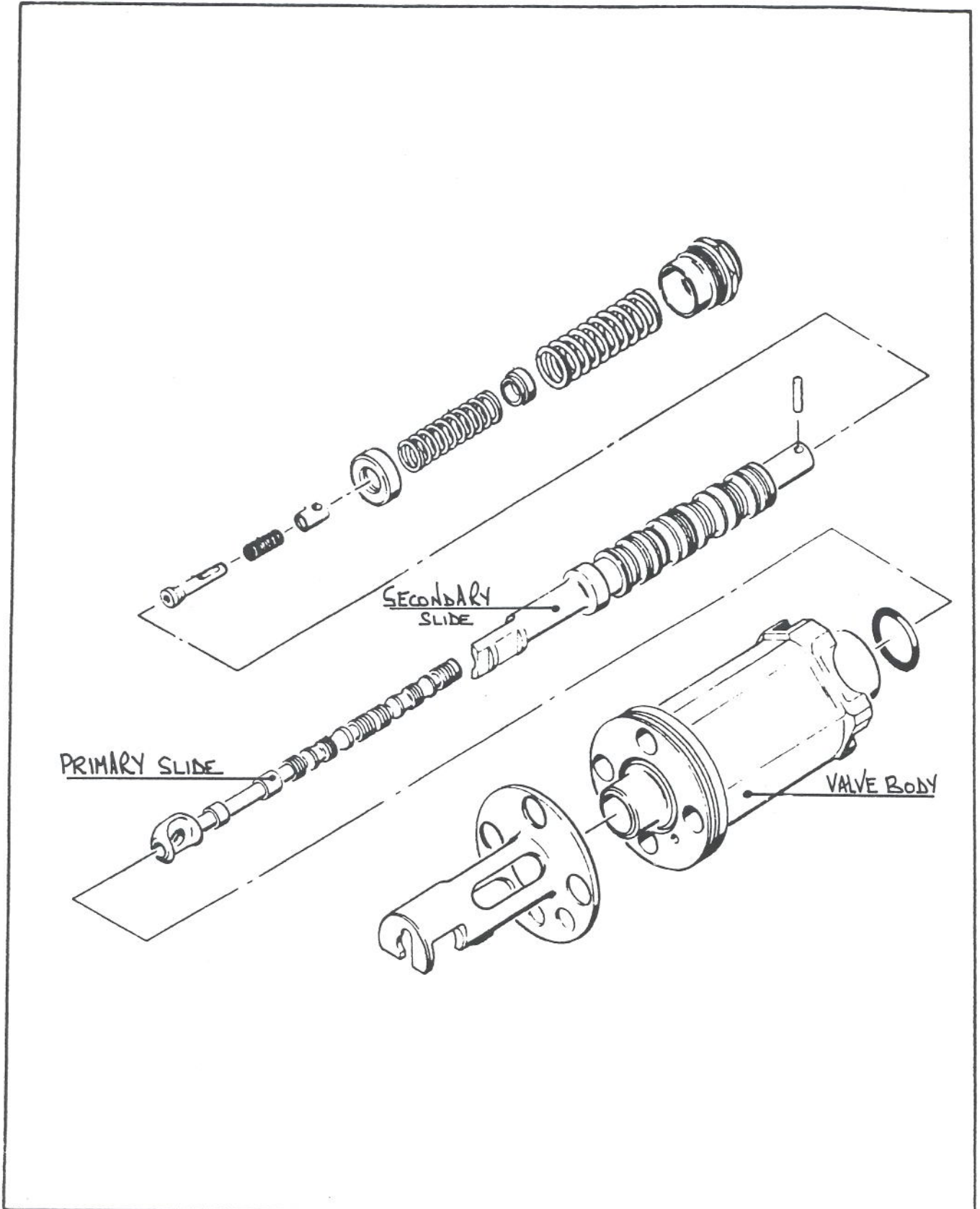


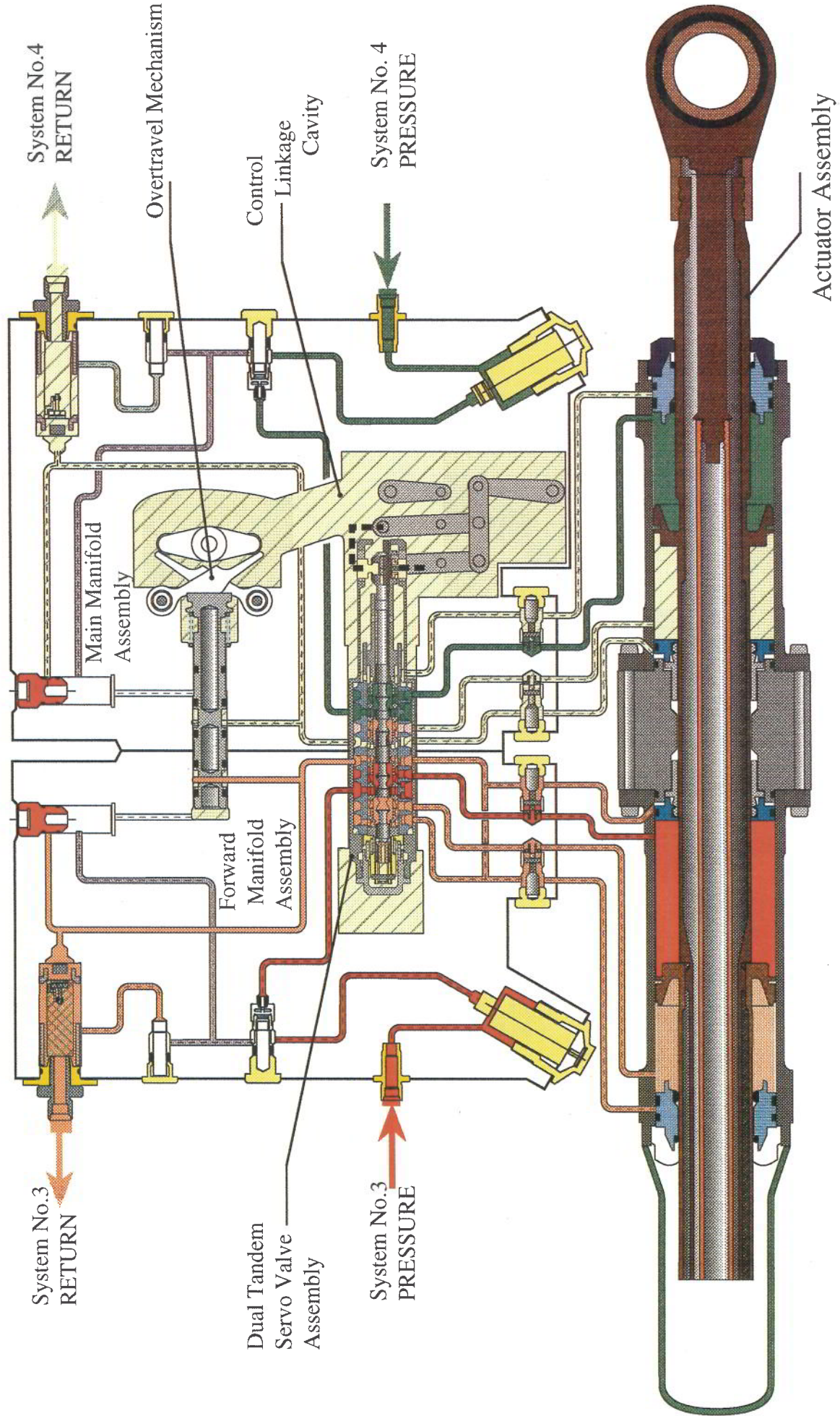
# Flight Controls



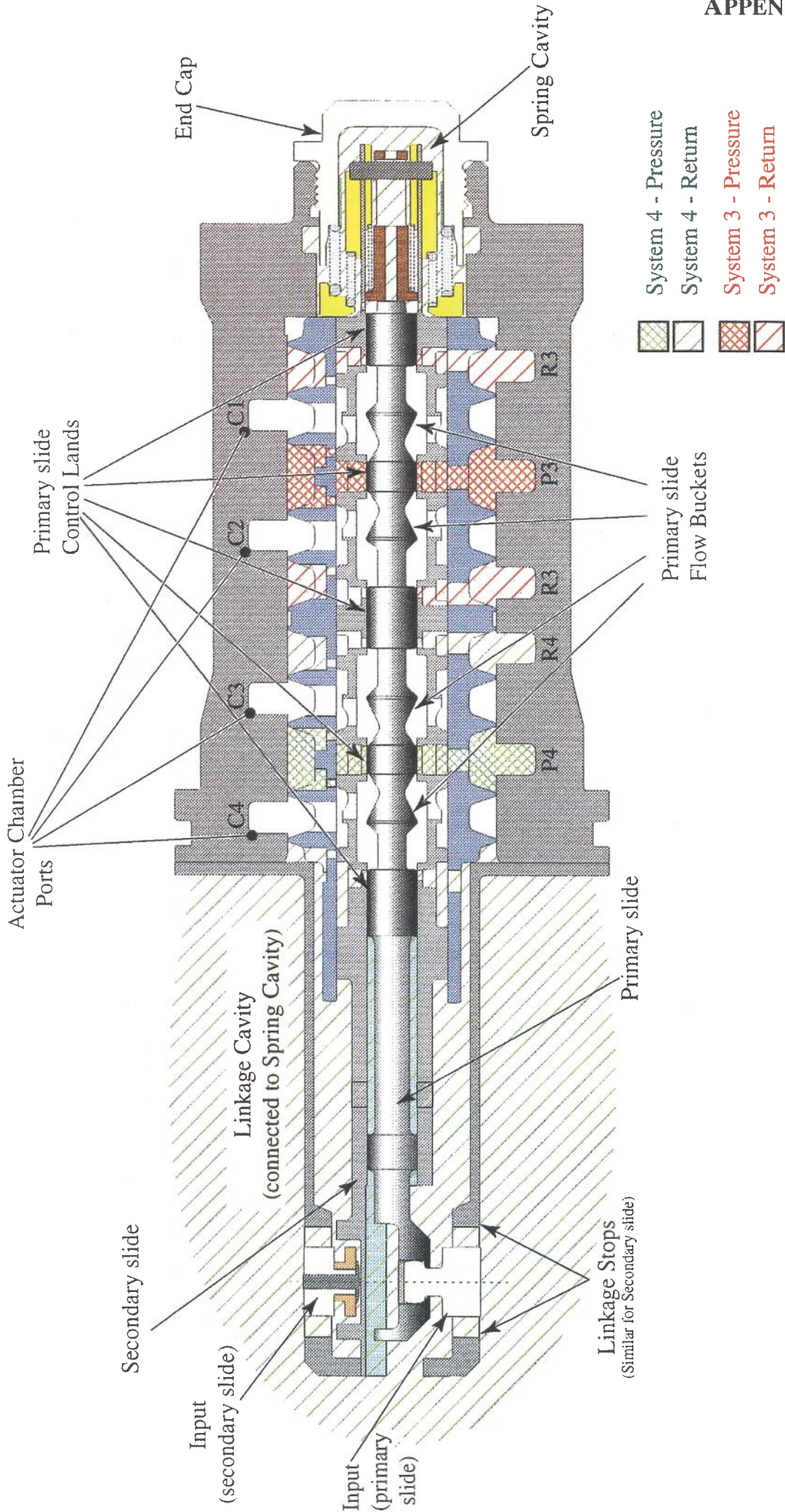
*Elevator Control System*



Dual Tandem Servo Valve Assembly



Right Inboard Elevator Power Control Package Hydraulic Diagram



**Dual Concentric Servo Valve**  
 Depicted for Inboard right elevator - Neutral position of slides

Schematic of Elevator Power Actuator

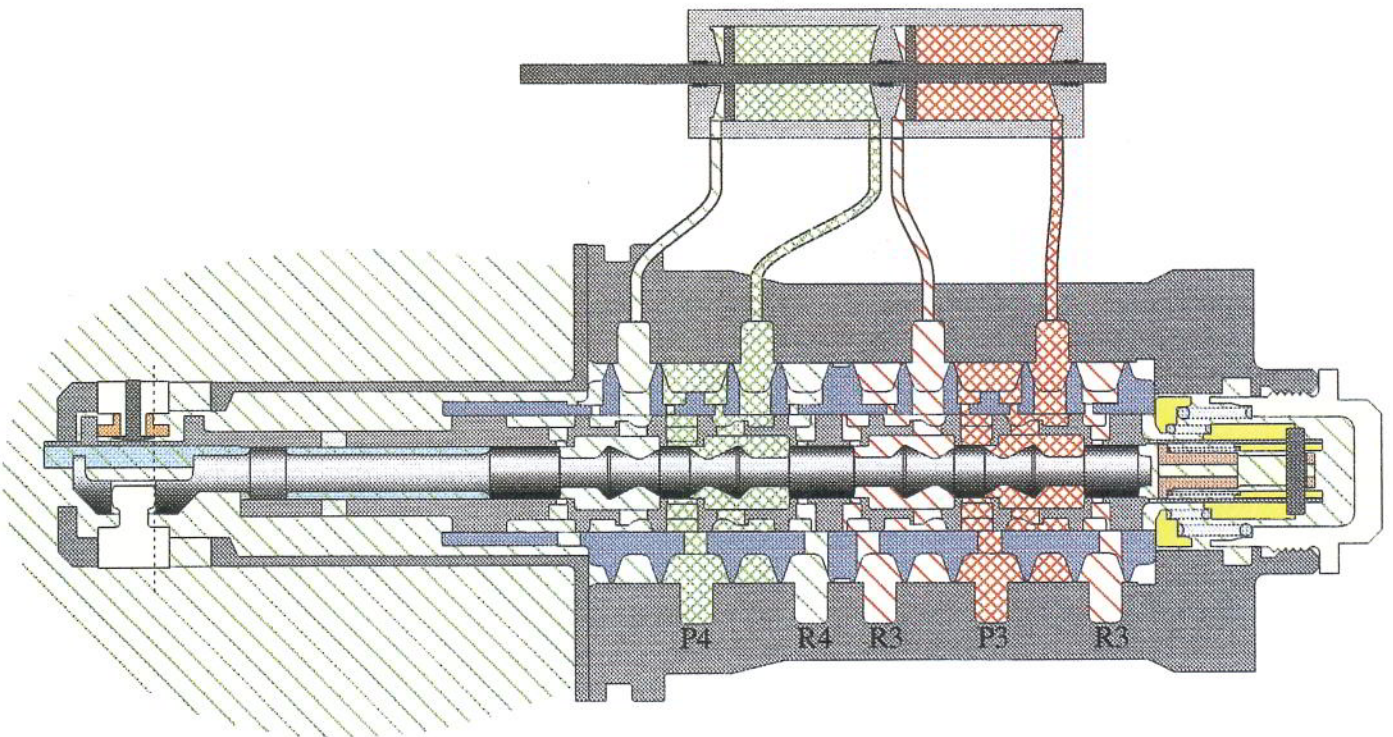






Fig.4 - Normal operation of servo valve  
- at Linkage Stops Extend

-  System 4 - Pressure
-  System 4 - Return
-  System 3 - Pressure
-  System 3 - Return

Schematic of Elevator Power Actuator

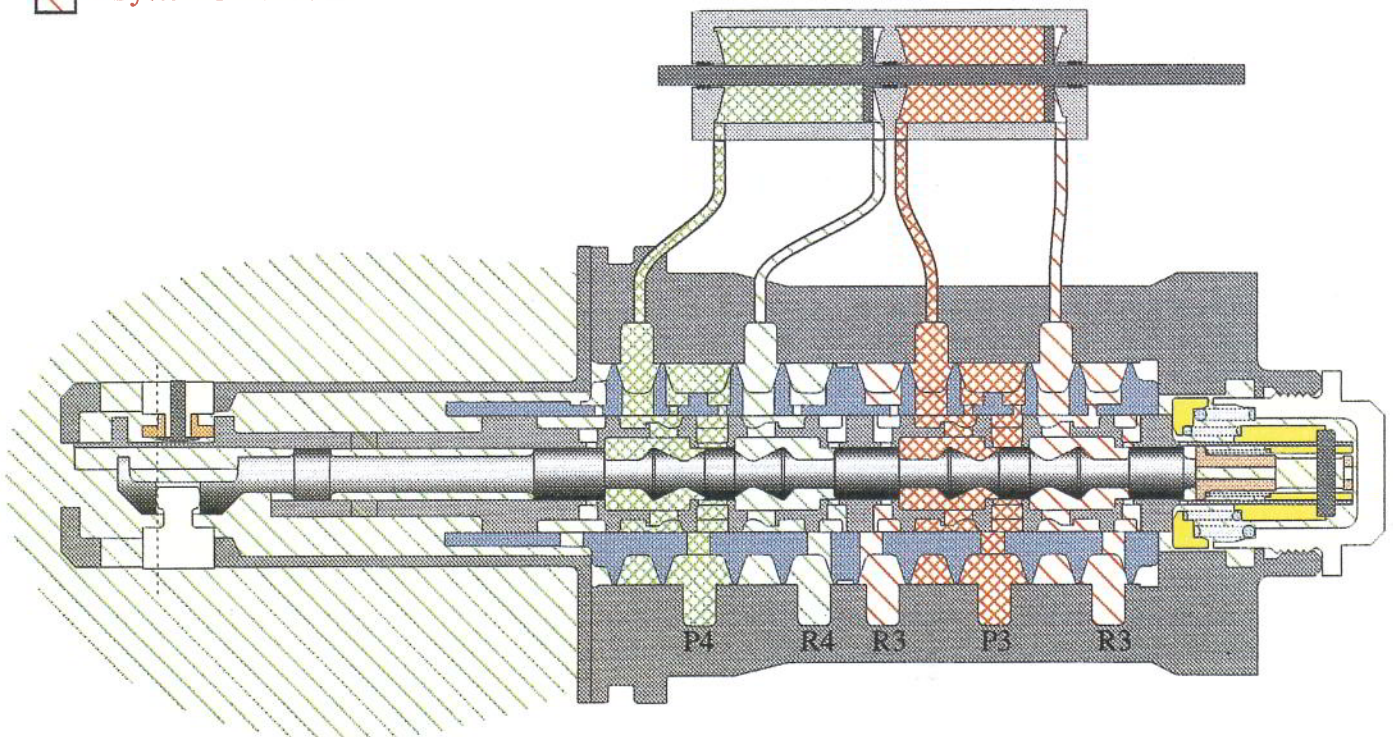
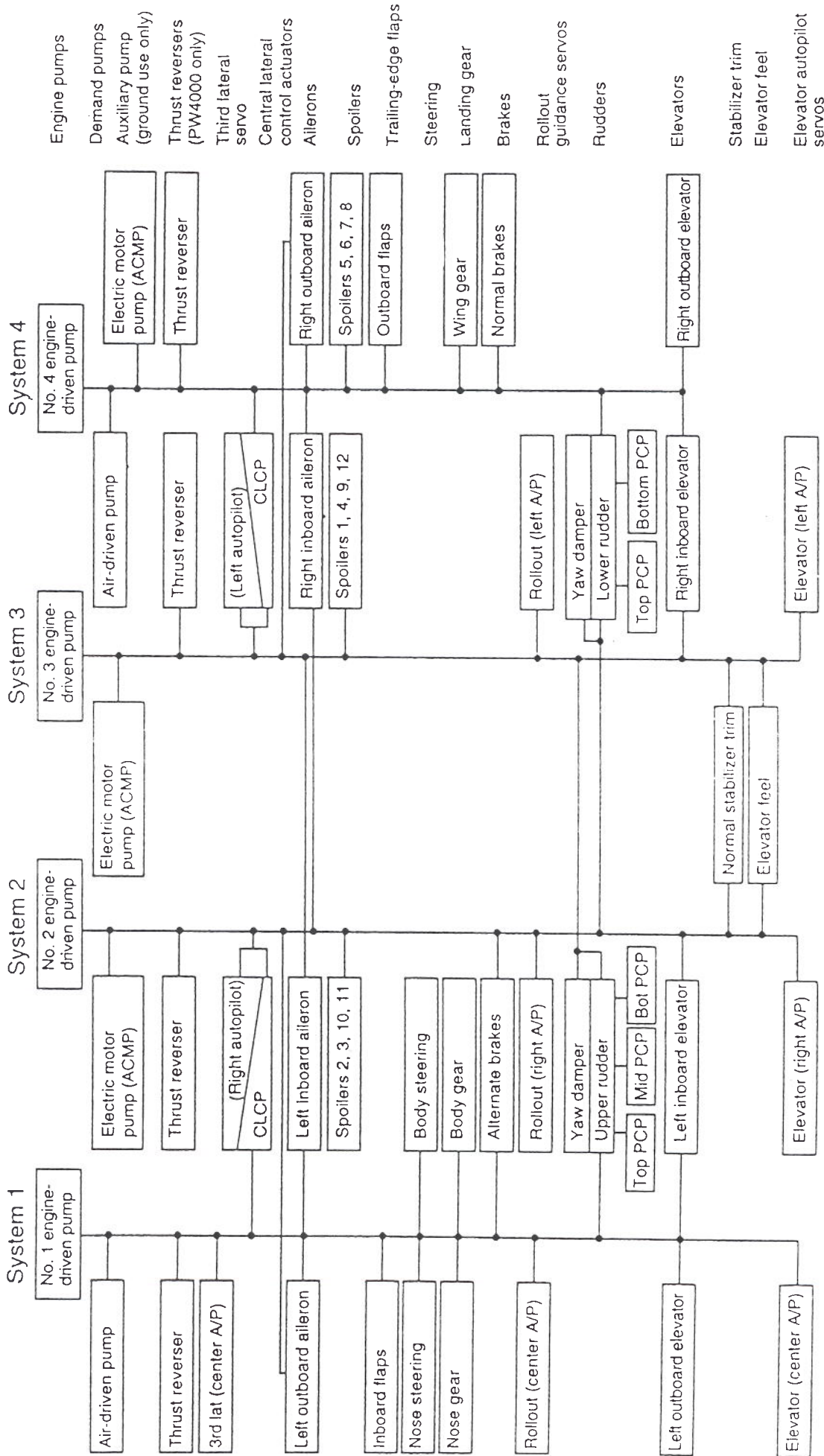
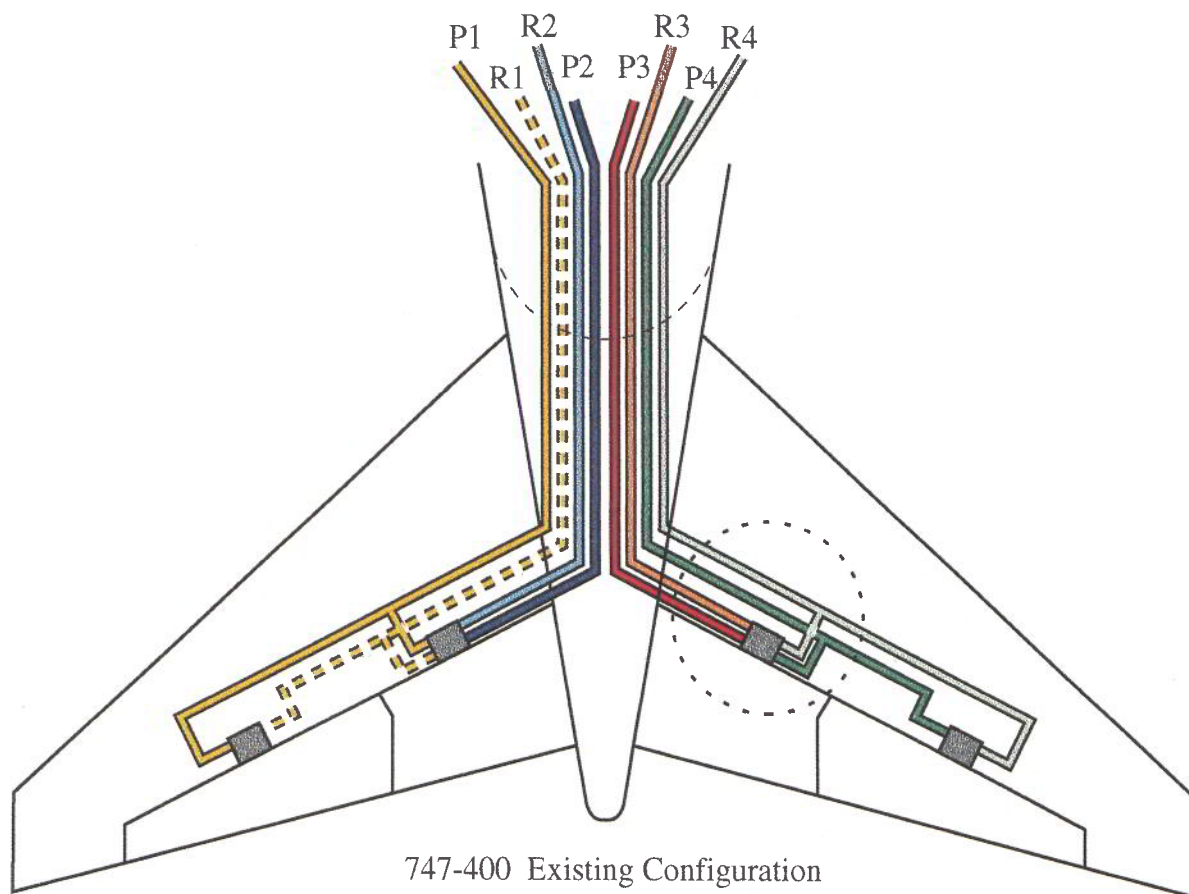


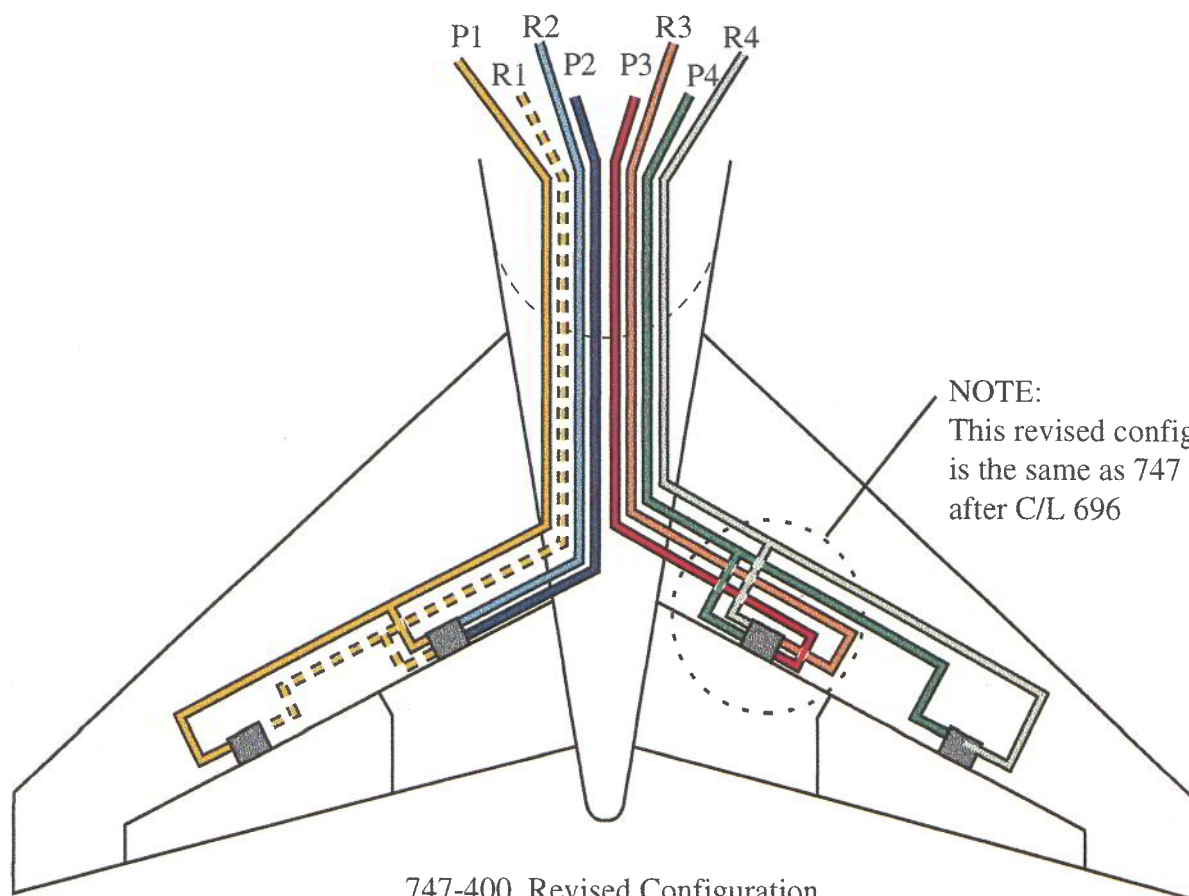
Fig.5 - Normal operation of servo valve  
- at Linkage Stops Retract



Hydraulic System Distribution



747-400 Existing Configuration



NOTE:  
This revised configuration  
is the same as 747 Classics  
after C/L 696

747-400 Revised Configuration

Figure 1

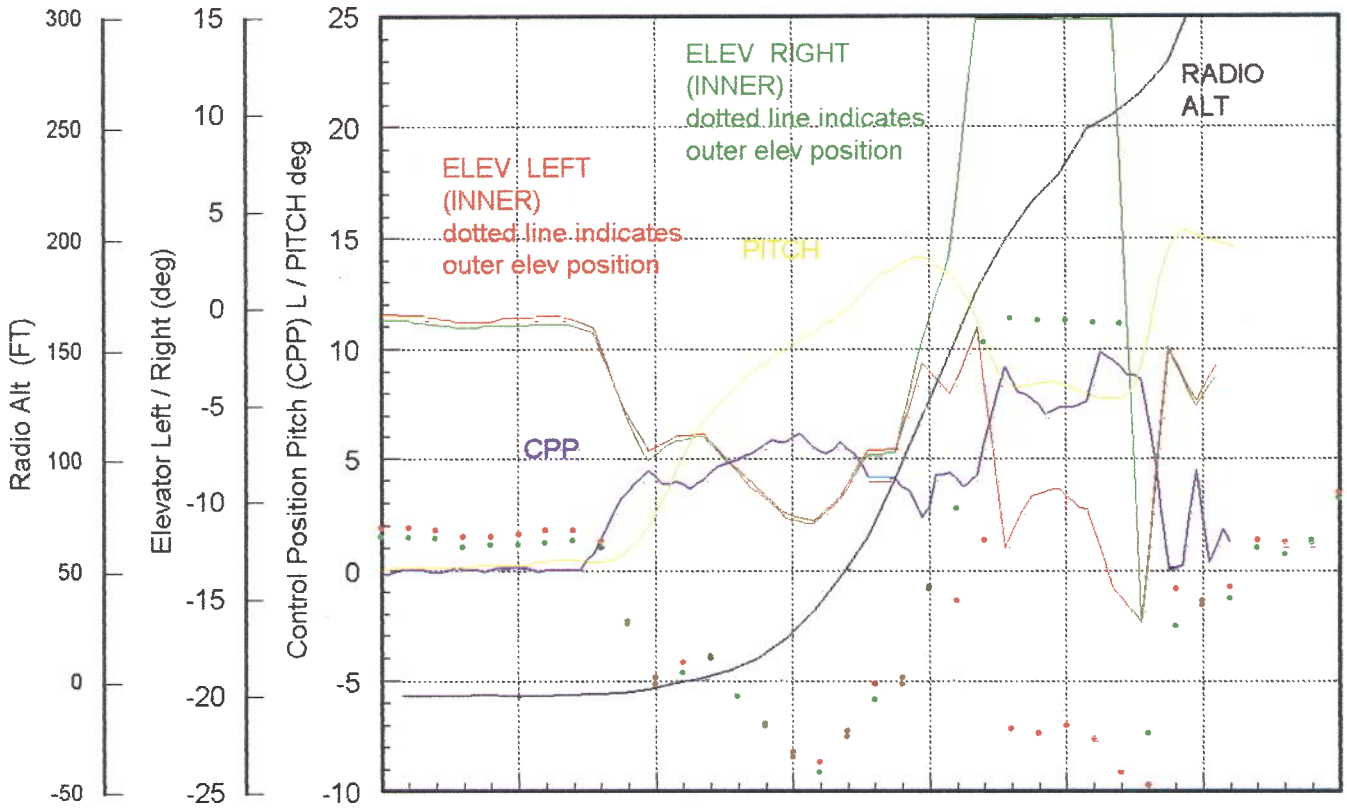


Figure 2

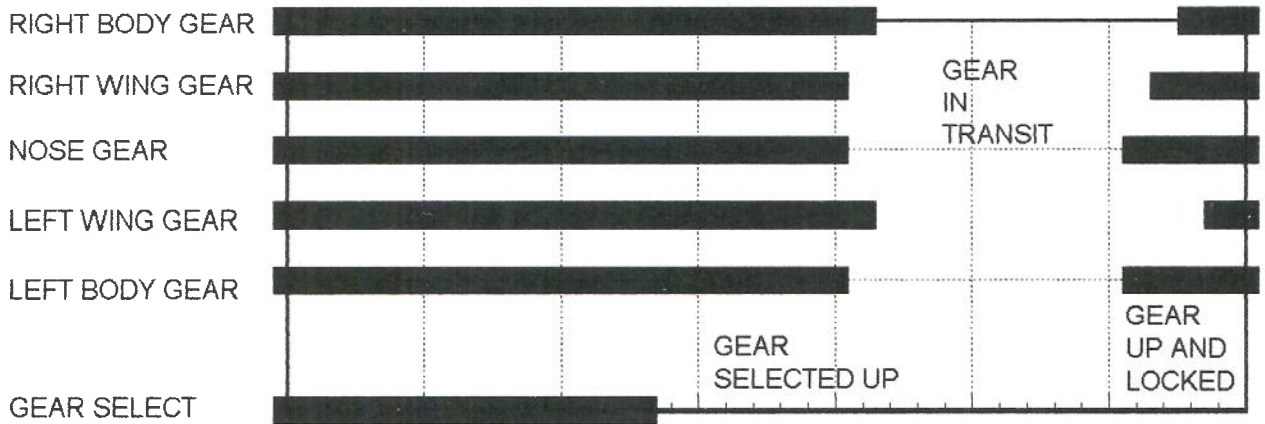
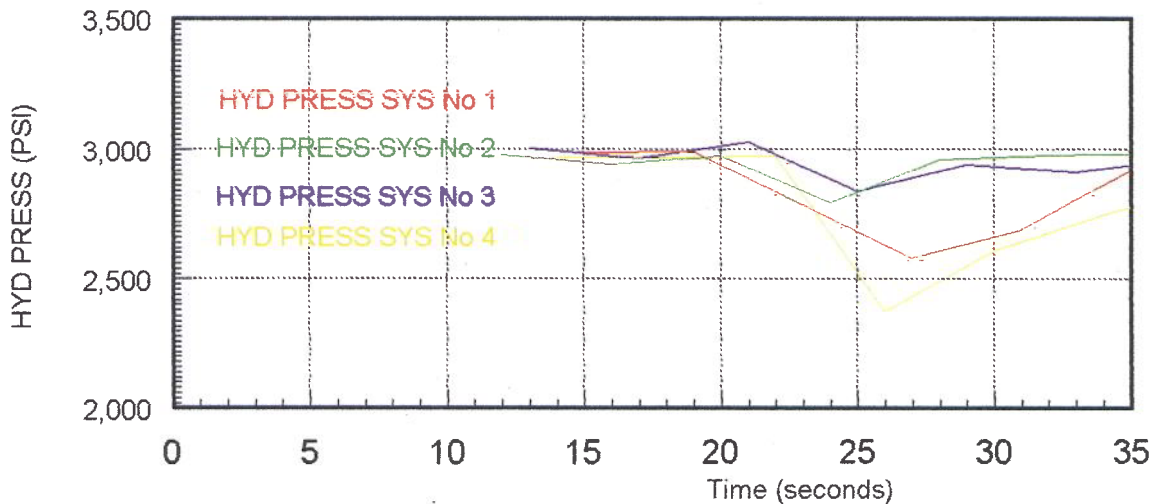
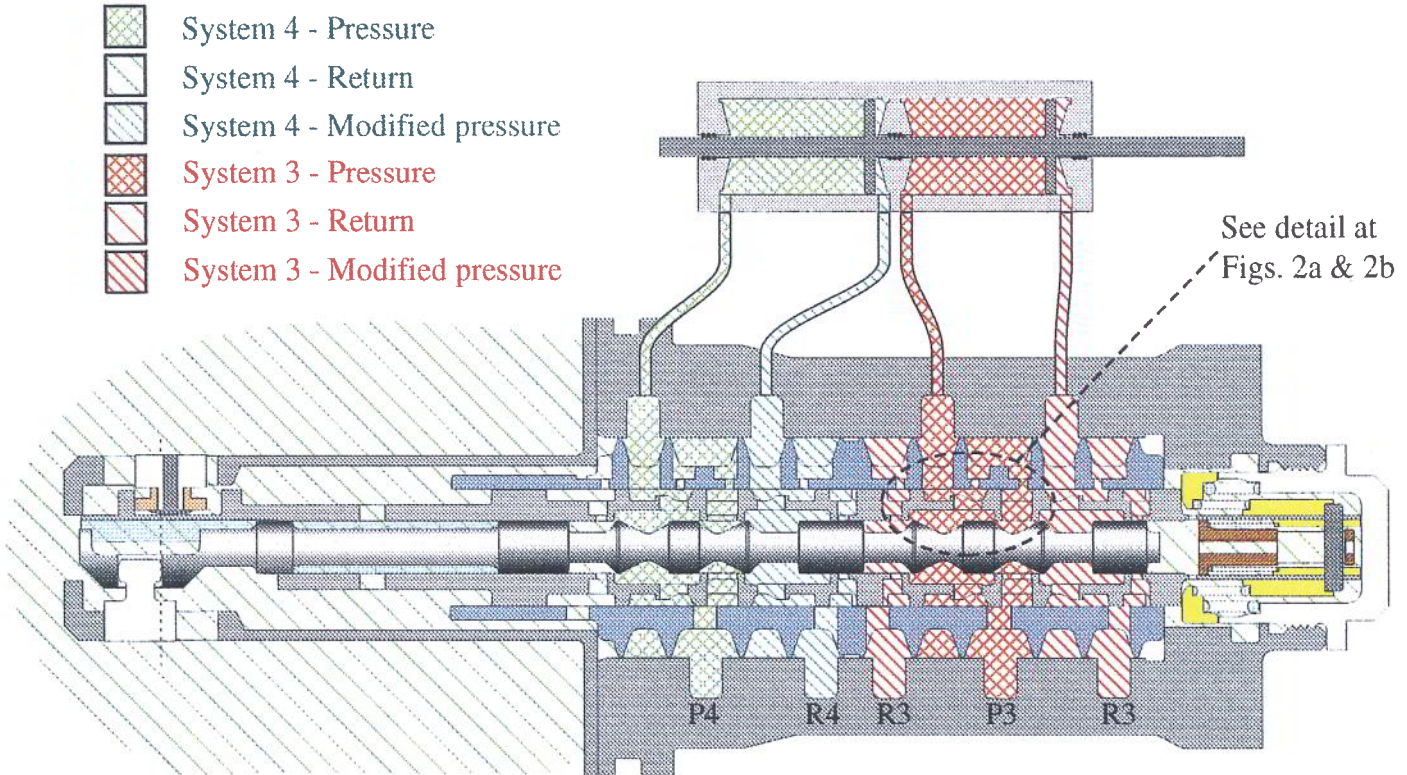
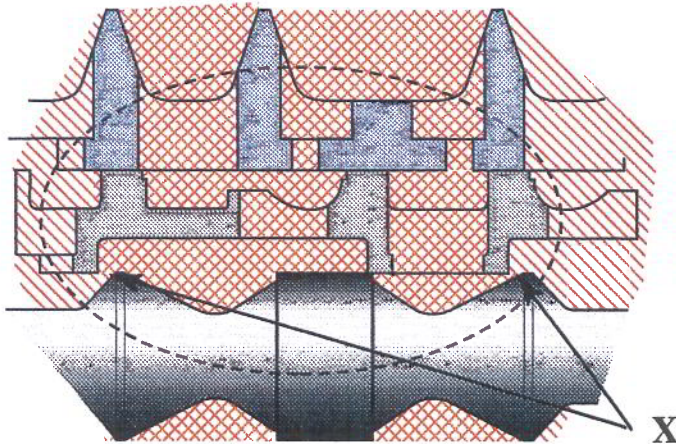


Figure 3



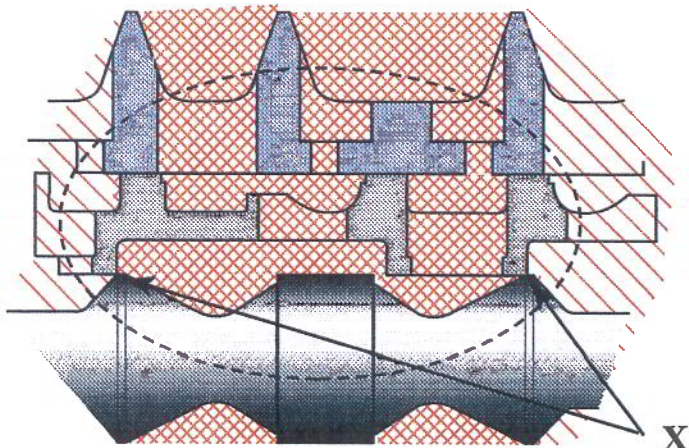


**Fig. 1** Secondary valve slide driven to internal stop (retract direction)  
Primary extended to linkage stop



**Fig. 2a**

Servo valve in 'Cross flow'  
condition.  
Restricted flow paths at 'X'



**Fig. 2b**

Servo valve with 'Cross flow'  
paths at 'X' closed off.