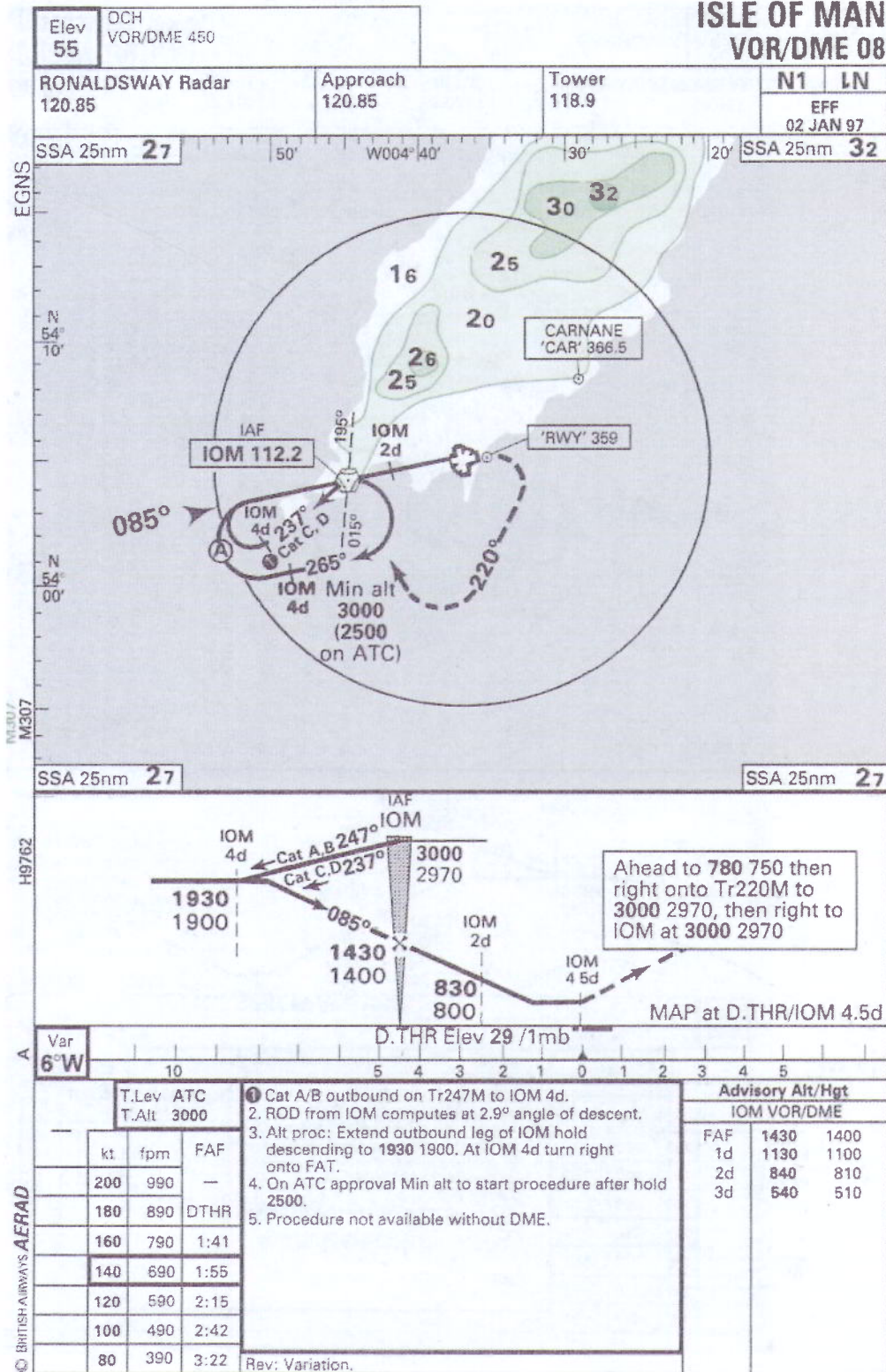
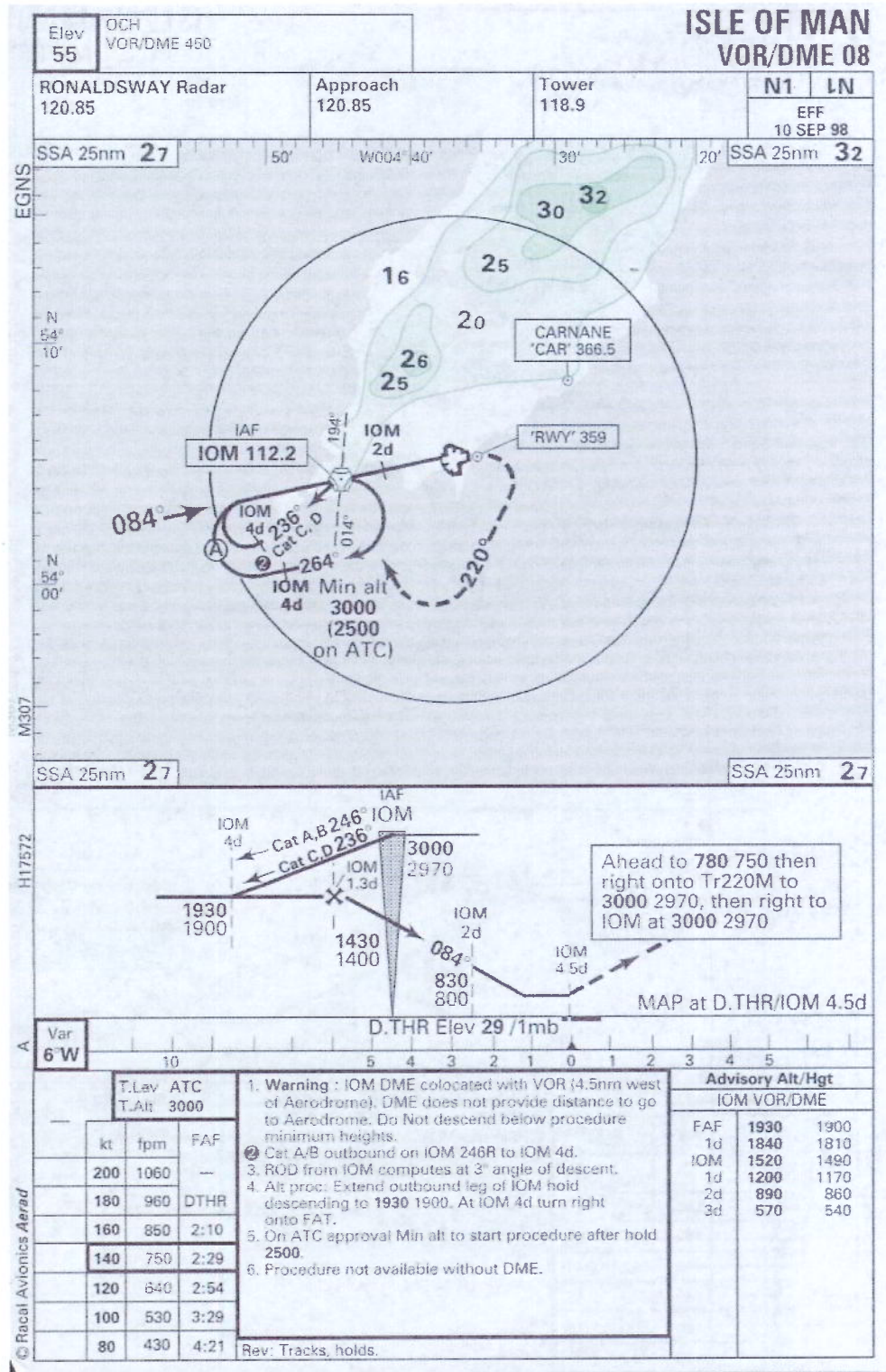


**ISLE OF MAN  
VOR/DME 08**



**Figure 1 ISLE OF MAN VOR/DME 08 APPROACH  
PROCEDURE  
AERAD CHART**

(Not for navigational purposes - information only)  
(Reproduced with permission of Racal Avionics Aerad)



**Figure 2 ISLE OF MAN VOR/DME 08  
REVISED APPROACH PROCEDURE  
AERAD CHART**

(Not for navigational purposes - information only)  
(Reproduced with permission of Racal Avionics Aerad)

**JAR-OPS1  
AERODROME OPERATING MINIMA**

**ISLE OF MAN**

**AJ1  
08 JAN 98**

The following Aerodrome Operating Minima is for Public Transport Aircraft and conforms to JAR-OPS1 regulations. See explanatory notes for further information.

Procedure	STRAIGHT-IN	A			B			C			D			
		DA/	DH/	RVR	DA/	DH/	RVR	DA/	DH/	RVR	DA/	DH/	RVR	
		MDA	MDH	Vis	MDA	MDH	Vis	MDA	MDH	Vis	MDA	MDH	Vis	
		QNH	QFE	m	QNH	QFE	m	QNH	QFE	m	QNH	QFE	m	
03	SRA 2nm	625	600	1500	625	600	1500	725	700	2000	725	700	2000	
08	SRA 2nm	(1)	450	420	900	450	420	1000	450	420	1000	450	420	1400
08	VOR/DME	(2)	480	450	1000	480	450	1200	480	450	1200	480	450	1600
08	NDB/DME	(1)	450	420	900	450	420	1000	450	420	1000	450	420	1400
26	ILS/DME	(3)	235	200	700	235	200	700	235	200	700	235	200	700
26	LLZ/DME	(1)	435	400	1200	435	400	1300	435	400	1400	435	400	1600
26	LLZ w/o FAF	(2)	485	450	1400	485	450	1500	485	450	1600	485	450	1800
26	SRA 2nm	(2)	635	600	1400	635	600	1500	635	600	1600	635	600	1800
26	NDB/DME	(2)	585	550	1400	585	550	1500	585	550	1600	585	550	1800
26	NDB	(2)	635	600	1400	635	600	1500	635	600	1600	635	600	1800
35	SRA 2nm		620	600	1500	620	600	1500	620	600	2000	620	600	2000

Notes:

(1) RVR increased to 1500m, 1500m, 1800m, 2000m respectively when App light w/s.

(2) RVR increased to 1500m, 1500m, 2000m, 2000m respectively when App light w/s.

(3) RVR increased to 1000m when App light w/s.

All Runways South of 09/27	CIRCLING	A			B			C			D		
		MDA	MDH	Vis	MDA	MDH	Vis	MDA	MDH	Vis	MDA	MDH	Vis
		QNH	QFE	m	QNH	QFE	m	QNH	QFE	m	QNH	QFE	m
		ft	ft	m	ft	ft	m	ft	ft	m	ft	ft	m
		655	600	1500	755	700	1600	2005	1950	2400	2005	1950	3600
		655	600	1500	855	800	1600	855	800	2400	955	900	3600

Aircraft Category	TAKE-OFF				
	H/ R/W edge & c/l lights+multi RVR (See note 1 below)	R/W edge & c/l lights+multi RVR	R/W edge and c/l lights	Edge lights or c/l markings (See note 2 below)	No facilities day only
A	125	150	200	250	500
B	125	150	200	250	500
C	125	150	200	250	600
D	150	200	250	300	500

Notes:

(1) Subject to approval, see Explanatory Notes

(2) For night operations, at least runway edge and end lights required

**Figure 3 Aerad page of Aerodrome Operating Minima to JAR-OPS1 criteria**

**(Not for navigational purposes - information only)  
(Reproduced with permission of Racal Avionics Aerad)**

**CAP360:1990  
AERODROME OPERATING MINIMA**
**ISLE OF MAN**
**A0  
03 APR 95**

The following Aerodrome Operating Minima is for Public Transport Aircraft and conforms to the UK CAA CAP 360 (April 1990) regulations. See explanatory notes at front of manual.

LANDING	Procedure	A			B			C			D		
		DA/	DH/	RVR	DA/	DH/	RVR	DA/	DH/	RVR	DA/	DH/	RVR
		MDA	MDH		MDA	MDH		MDA	MDH		MDA	MDH	
		QNH	QFE	m	QNH	QFE	m	QNH	QFE	m	QNH	QFE	m
		ft	ft	m	ft	ft	m	ft	ft	m	ft	ft	m
03	SRA 2nm	625	600	1500	625	600	1500	725	700	1500	725	700	1500
08	SRA 2nm (1)	450	420	1300	450	420	1300	450	420	1300	450	420	1300
08	VOR/DME (1)	480	450	1300	480	450	1300	480	450	1300	480	450	1300
08	NDB/DME (1)	450	420	1300	450	420	1300	450	420	1300	450	420	1300
26	ILS/DME (2)	235	200	700	235	200	700	235	200	700	235	200	700
26	LLZ/DME (3)	435	400	1100	435	400	1100	435	400	1100	435	400	1100
26	LLZ w/o FAF (1)	485	450	1200	485	450	1200	485	450	1200	485	450	1200
26	SRA 2nm	635	600	1500	635	600	1500	635	600	1500	635	600	1500
26	NDB/DME (4)	585	550	1400	585	550	1400	585	550	1400	585	550	1400
26	NDB	635	600	1500	635	600	1500	635	600	1500	635	600	1500
35	SRA 2nm	620	600	1500	620	600	1500	620	600	1500	620	600	1500

**Notes:**

- (1) RVR increased to 1400m when App light w/s.  
 (2) RVR increased to 900m when App light w/s.  
 (3) RVR increased to 1300m when App light w/s.  
 (4) RVR increased to 1500m when App light w/s.

CIRCLING		A			B			C			D		
		MDA	MDH	IFV	MDA	MDH	IFV	MDA	MDH	IFV	MDA	MDH	IFV
		QNH	QFE		QNH	QFE		QNH	QFE		QNH	QFE	
		ft	ft	m	ft	ft	m	ft	ft	m	ft	ft	m
All Runways		655	600	1900	755	700	2800	2005	1950	3700	2005	1950	4600
S of 09/27		655	600	1900	655	600	2800	855	800	3700	955	900	4600

TAKE-OFF	A	B	C	D
----------	---	---	---	---

• See General Notes

**Figure 4 Aerad page of Aerodrome Operating Minima to CAP360 criteria**

(Not for navigational purposes - information only)  
 (Reproduced with permission of Racal Avionics Aerad)

Airfield Approaches (VOR/DME/NDB/LOC) - ONE OR TWO ENGINES OPERATING

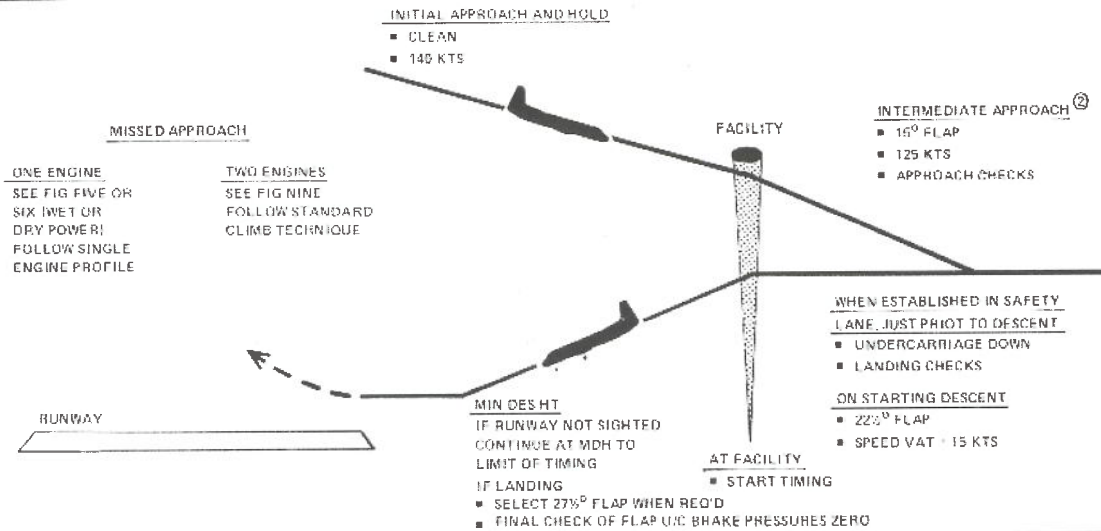
FIG II

PREPARATION

- AIDS - TIME AND IDENTIFY (BOTH PILOTS)

BRIEF

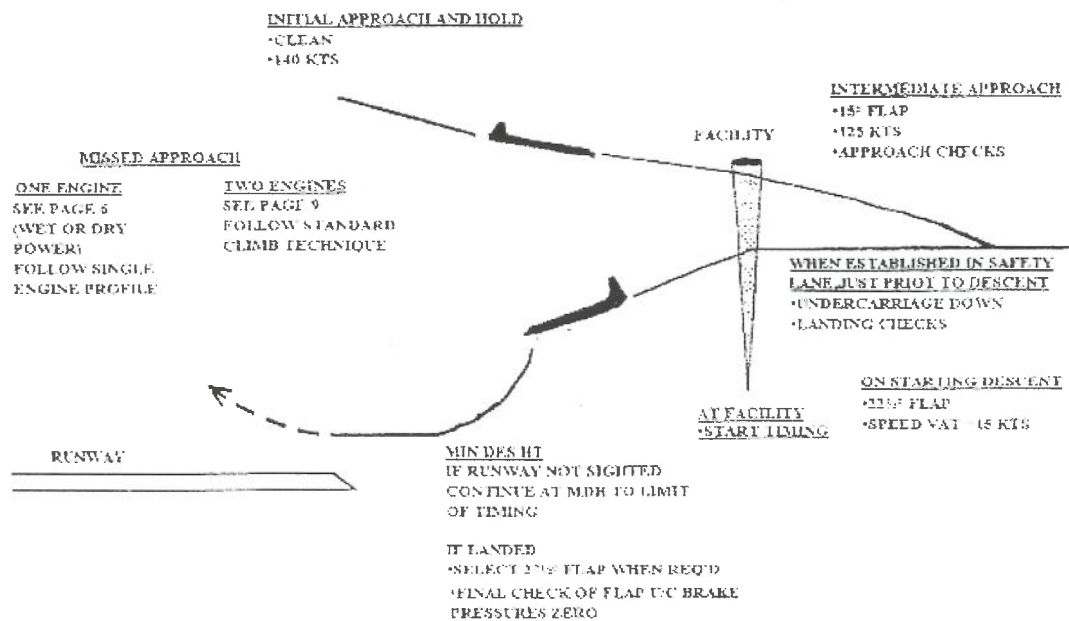
- MINIMUM DESCENT HEIGHT (SPECIFY WHETHER ONH OR OFF IF NECESSARY)
- TIMING FROM FACILITY TO THRESHOLD ①
- MIXED APPROACH INTENTIONS



NOTE

- 1 If the facility is located on the airfield, continue at MDH until over facility if runway not previously sighted.
- 2 INTERMEDIATE APPROACH is defined as the procedure turn and the approach up to the start of the final descent.

PREPARATION	BRIEF
	<ul style="list-style-type: none"> <li>MINIMUM DESCENT HEIGHT (SPECIFY WHETHER QNH OR QFE IF NECESSARY)</li> </ul>
<ul style="list-style-type: none"> <li>AIDS-TUNE AND IDENTIFY (BOTH PILOTS)</li> </ul>	<ul style="list-style-type: none"> <li>TIMING FROM FACILITY TO THRESHOLD</li> </ul>
	<ul style="list-style-type: none"> <li>MIXED APPROACH INTENTIONS</li> </ul>

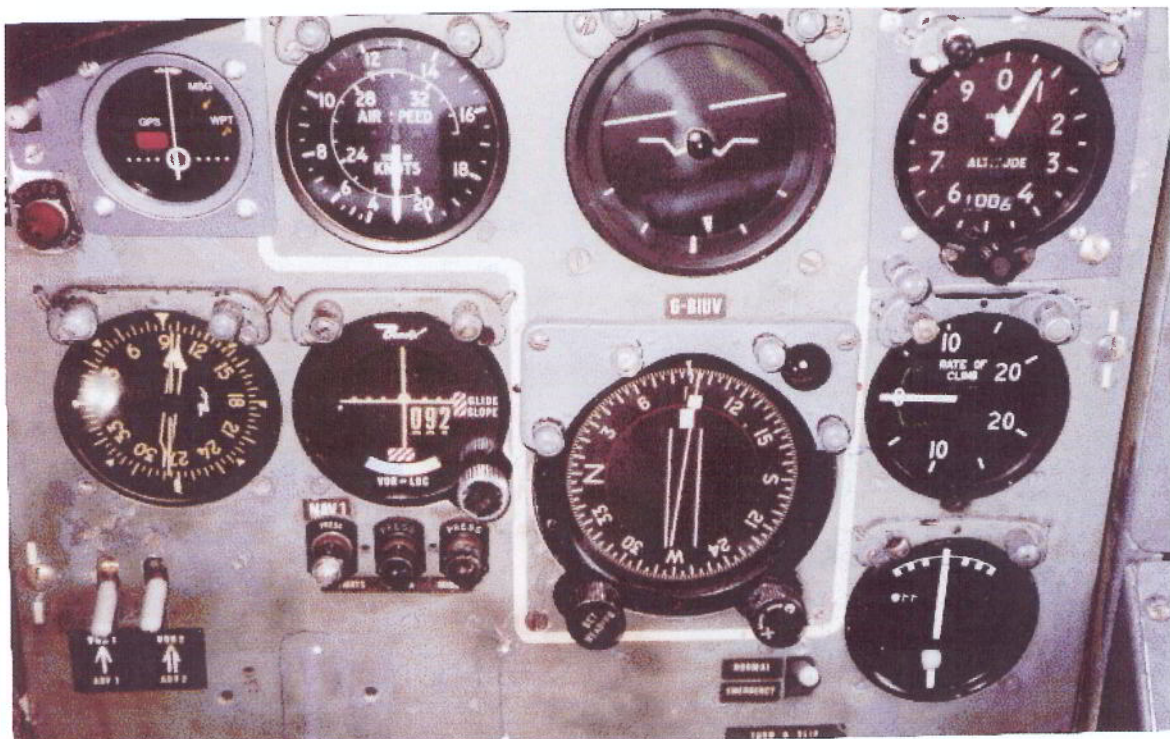


NOTE
1. If the facility is located on the airfield, continue at MDH until over facility if runway not previously sighted
2. INTERMEDIATE APPROACH is defined as the procedure turn and the approach up to the start of the final descent.

**FUEL CONSERVATION TECHNIQUES**



**Flight Deck Instrumentation**

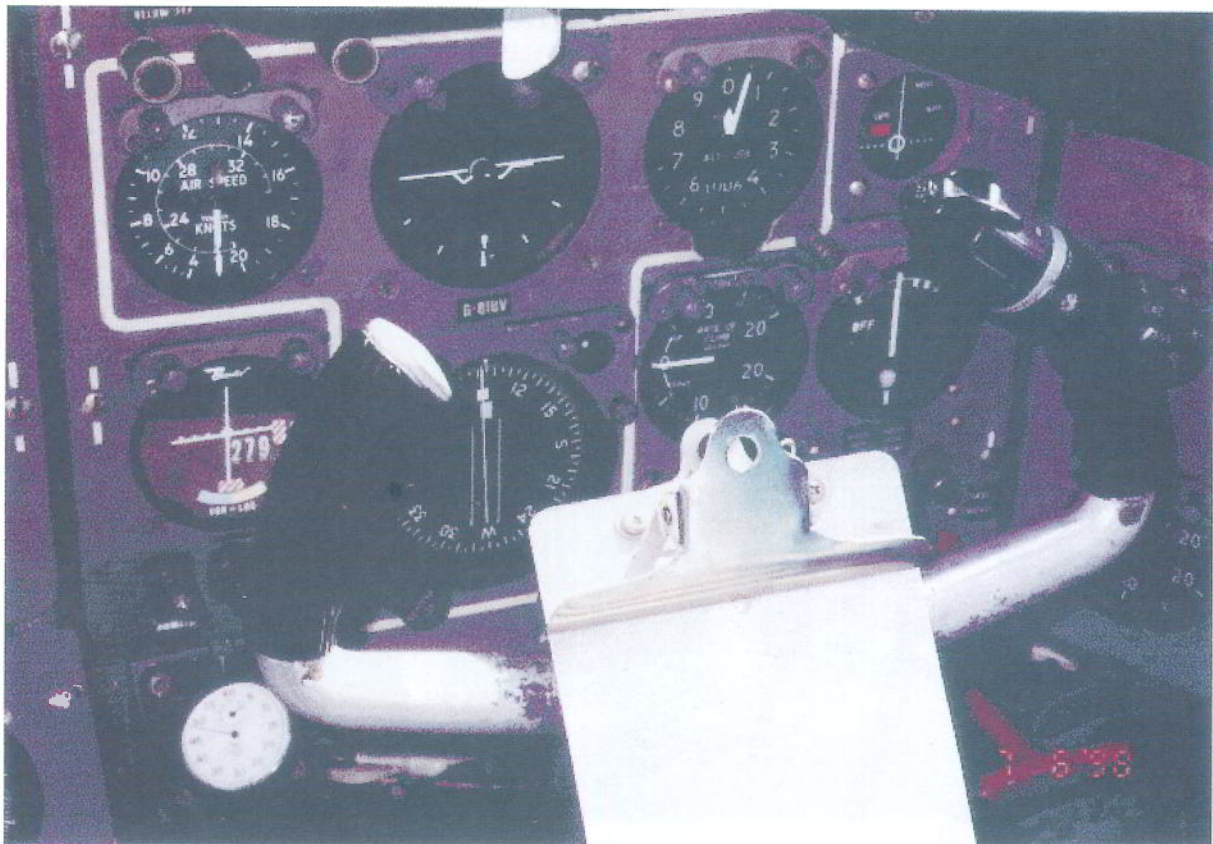


**Commander's Primary Flight Instruments**

**Figure 1 G-BIUV Flight Deck Instrument Panels**

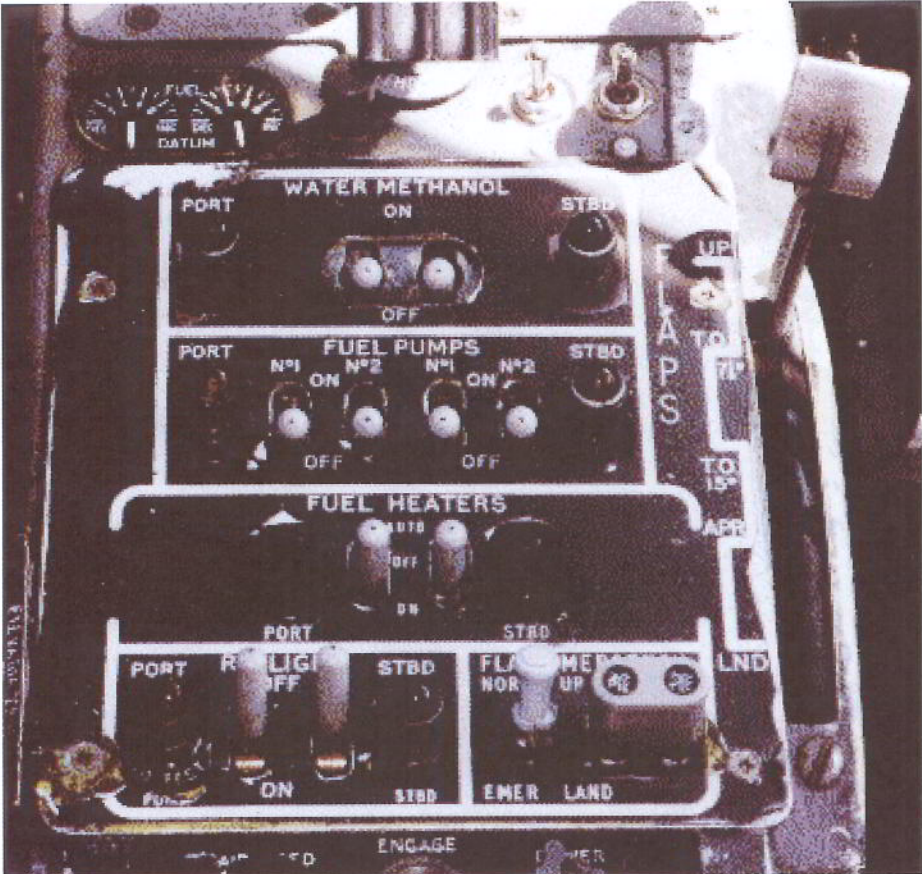


Centre Panel Instrumentation

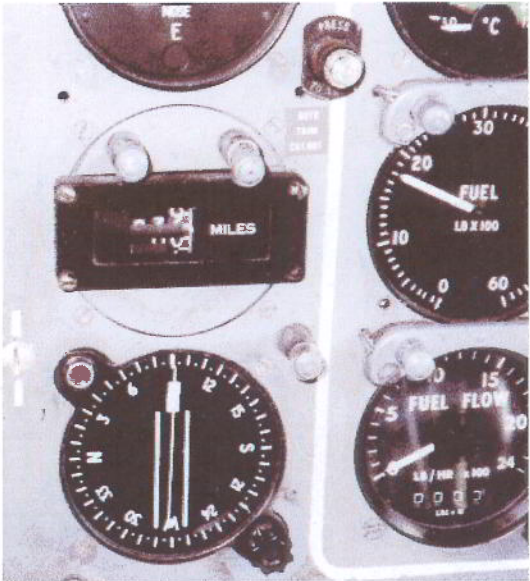


First Officer's Primary Flight Instruments

Figure 2 G-BIUV Flight Deck Instrument Panels

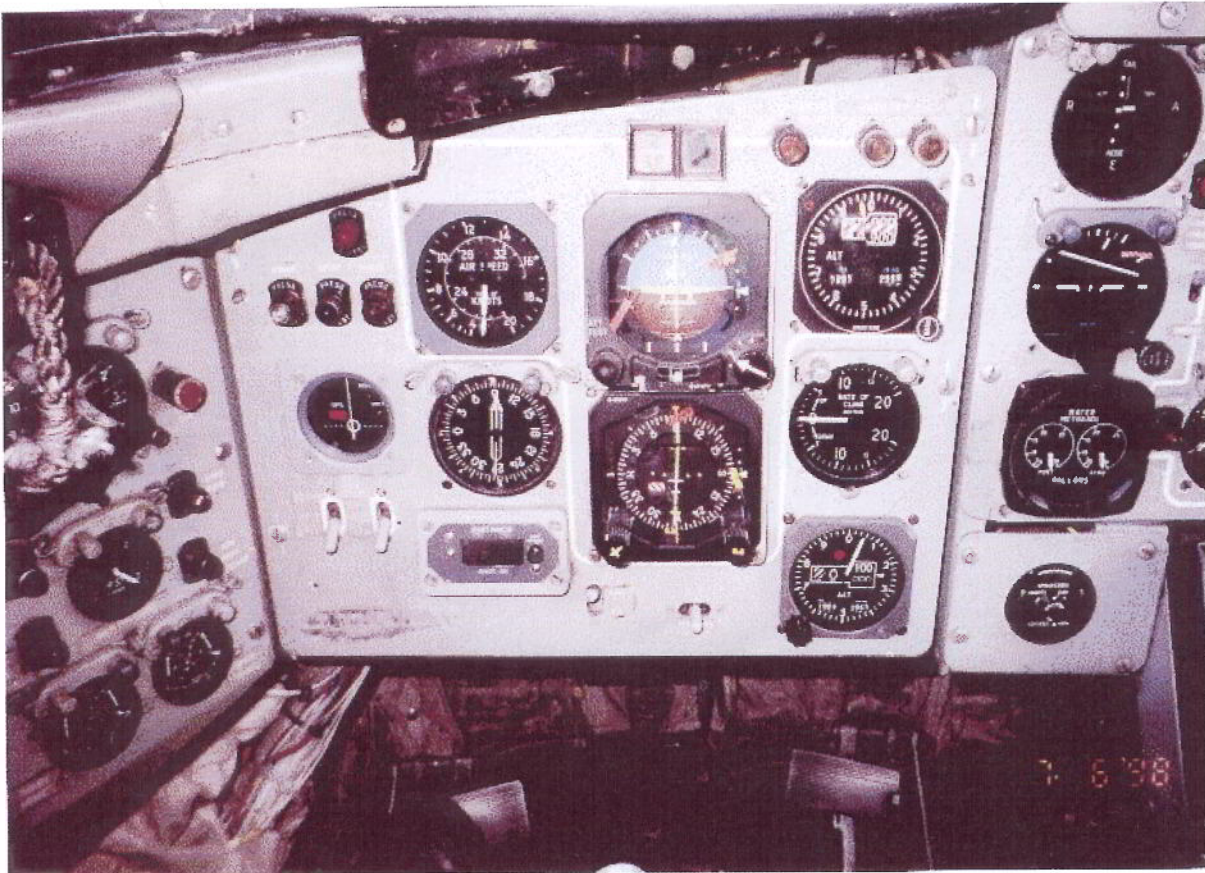


Detail of Flap Selector Lever Gating

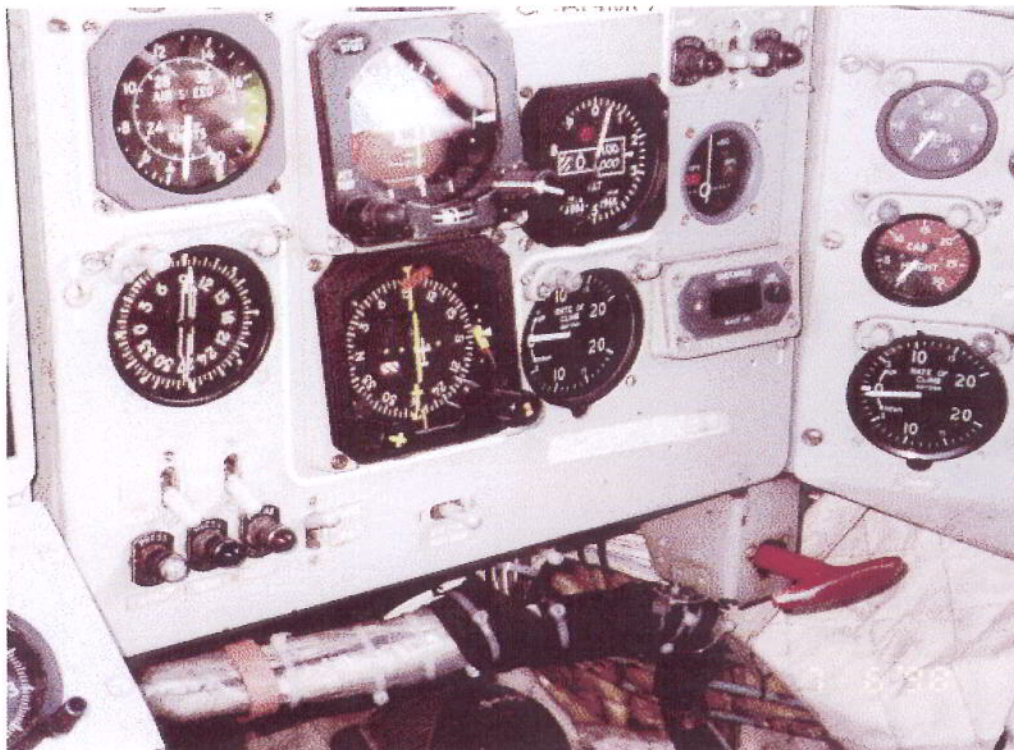


Detail of DME Indicator Panel

Figure 3 G-BIUV Flap Selector and DME Indicator



**Commander's Primary Flight Instruments**



**First Officer's Primary Flight Instruments**

**G-BGMO Flight Deck Instrument Panels**

APPENDIX F

Aircraft Movements 1997	Total	Air Transport	ILS 1/2	ATIS/VOLMET
<b>Airport</b>				
HEATHROW	440631	430706	2+2 *	AT LM SC
GATWICK	238836	229665	2	AT LM LN
MANCHESTER	168314	147404	2	AT LM LN
ABERDEEN	112540	86741	2	AT SC
STANSTED	104704	84333	2	AT LM
GLASGOW	98204	81609	2	AT LM SC
BIRMINGHAM	100721	79880	2	AT LS
EDINBURGH	99352	71884	2	AT SC
JERSEY	84975	49776	2	AT LS
NEWCASTLE	81279	42376	2	AT LN
EAST MIDLANDS	69958	40968	2	AT LN
LUTON	63586	40287	2	AT LS
GUERNSEY	61349	39625	2	AT
BELFAST INTERNATIONAL	95009	35070	1+1 *	AT SC
BELFAST CITY	37592	33283	1+LOC	AT
LONDON CITY	34605	32756	2	AT
BRISTOL	59547	31546	2	AT LS
LIVERPOOL	83354	28521	2	LN
LEEDS BRADFORD	57927	26123	2	AT LN
SOUTHAMPTON	55169	25703	1	AT LS
ISLE OF MAN	37776	21870	1	LN
CARDIFF WALES	60724	18171	2	AT LS
SUMBURGH	21684	17994	2	AT SC
NORWICH	52588	14518	1	AT LS
TEESSIDE	66073	10970	2	LN
PRESTWICK	63166	10230	2	AT SC
KIRKWALL	11900	9945	0	
HUMBERSIDE	35821	9860	1	AT
INVERNESS	22475	9289	0	SC
ALDERNEY	13744	7997	0	
EXETER	41513	7877	2	
PLYMOUTH	35342	7404	1	
COVENTRY	56998	6287	1	AT
BLACKPOOL	48097	5915	1	AT LN
BOURNEMOUTH	95243	5885	2	AT LS
PENZANCE HELIPORT	5780	5490	0	
STORNOWAY	7305	4958	0	SC
SCATSTA	5166	4638	0	
WICK	6196	4535	0	
BENBECULA	3925	3256	0	
LONDONDERRY	13035	3121	1	
LERWICK (TINGWALL)	2556	2485	0	
SOUTHEND	59020	2355	1	AT LS

ILS KEY

ILS 1 = One end of Runway equipped  
 ILS 2 = Both ends of Runway equipped  
 1+1 \* = Different Runways served  
 1+LOC = 1 ILS and 1 Localiser Only equipped

ATIS/VOLMET BROADCAST

AT = ATIS equipped  
 LN = London Volmet North  
 LS = London Volmet South  
 LM = London Volmet Main  
 SC = Scottish Volmet

**AIRPORT MOVEMENTS STATISTICS 1997 AND AUTOMATED SOURCES OF AIRPORT WEATHER INFORMATION**

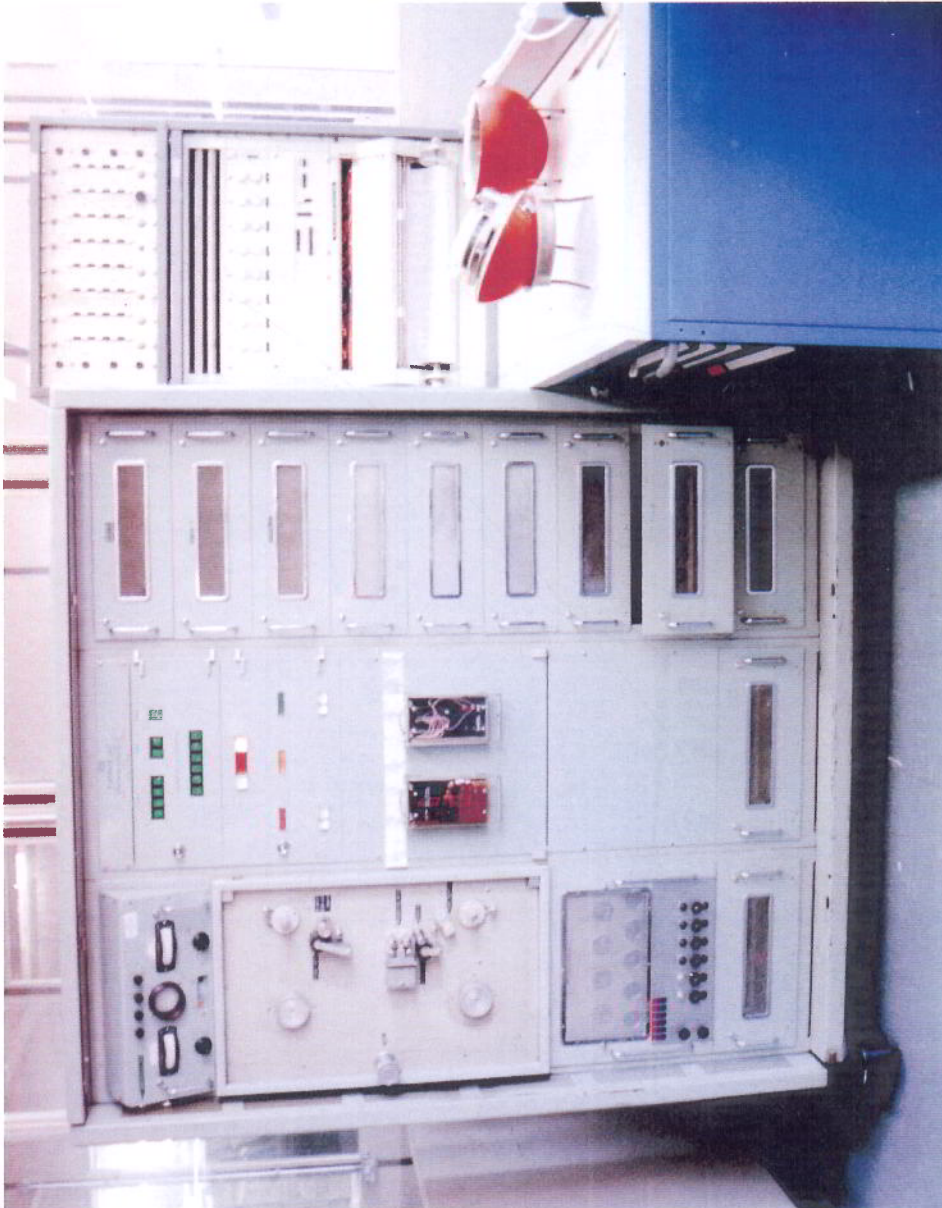


Figure 1 MIDAS Replay Equipment

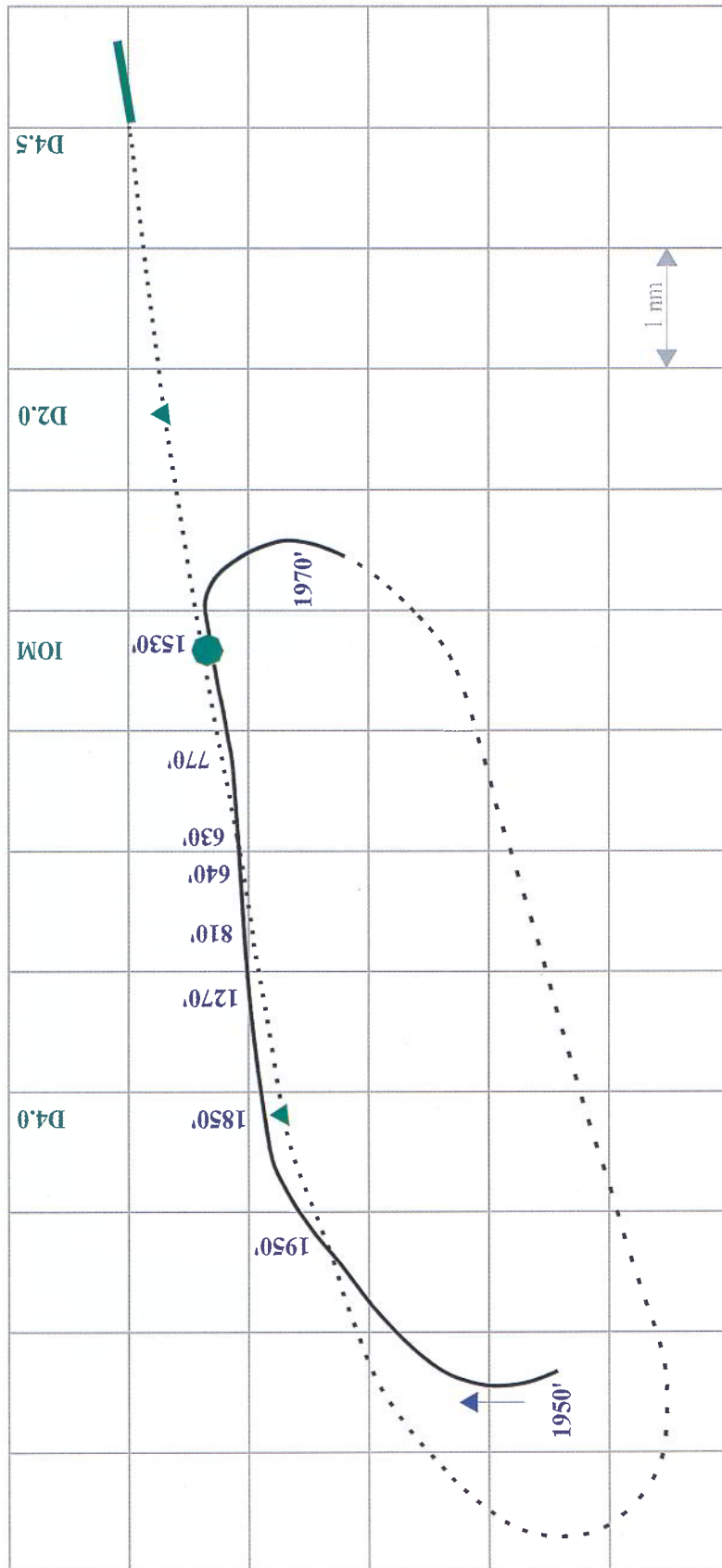


Figure 2 G-BIUV First Approach and Go-around

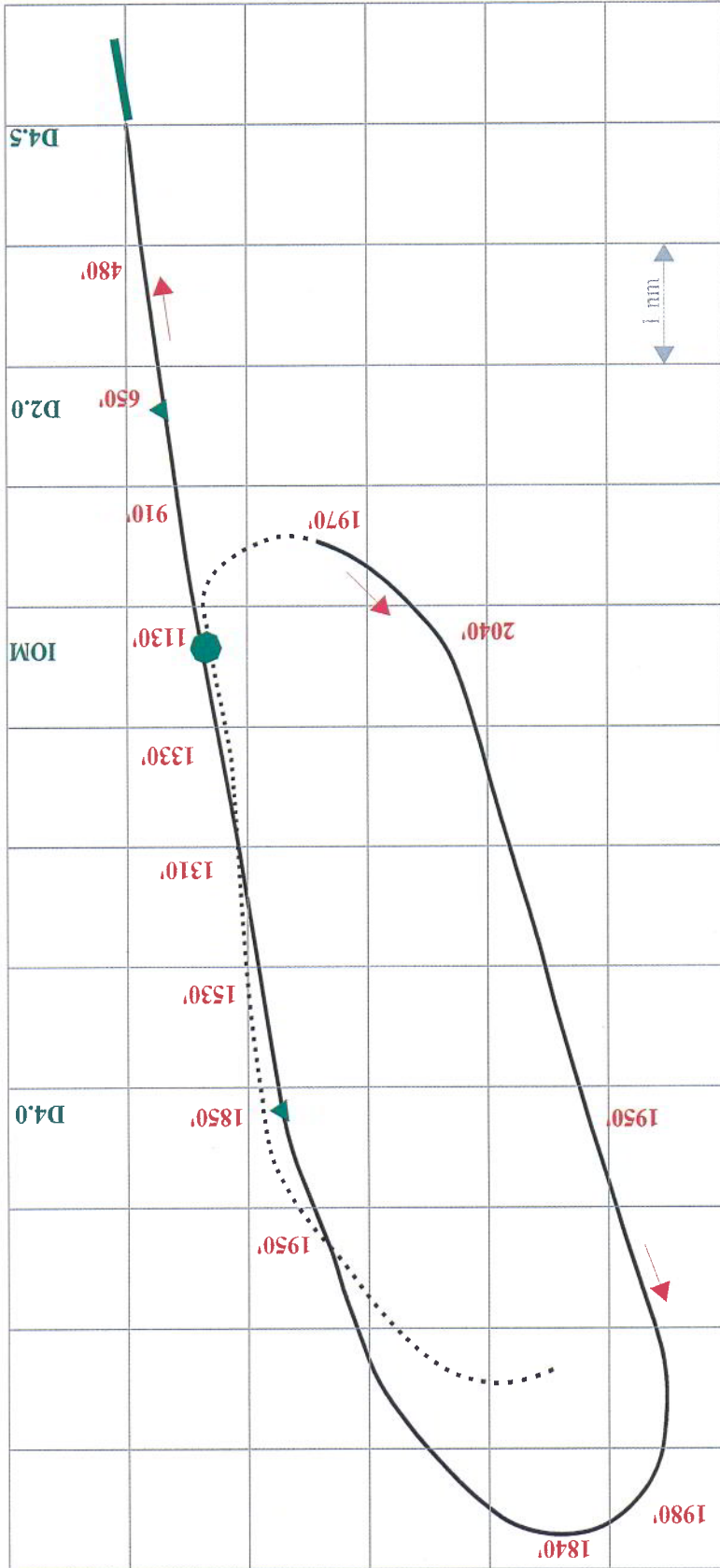


Figure 3 G-BIUV Second Approach and Landing

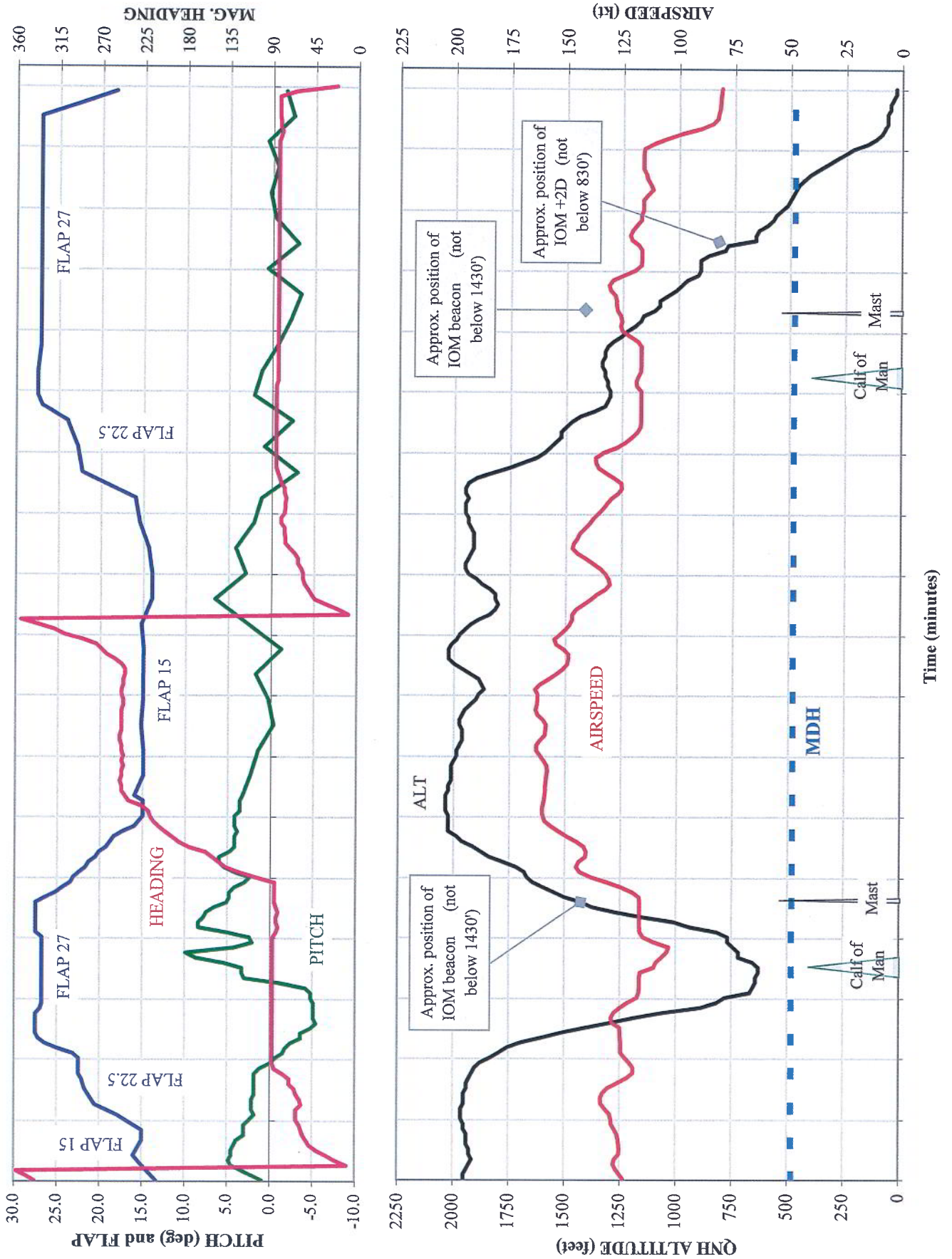


Figure 4 G-BIUV Approaches and Landing

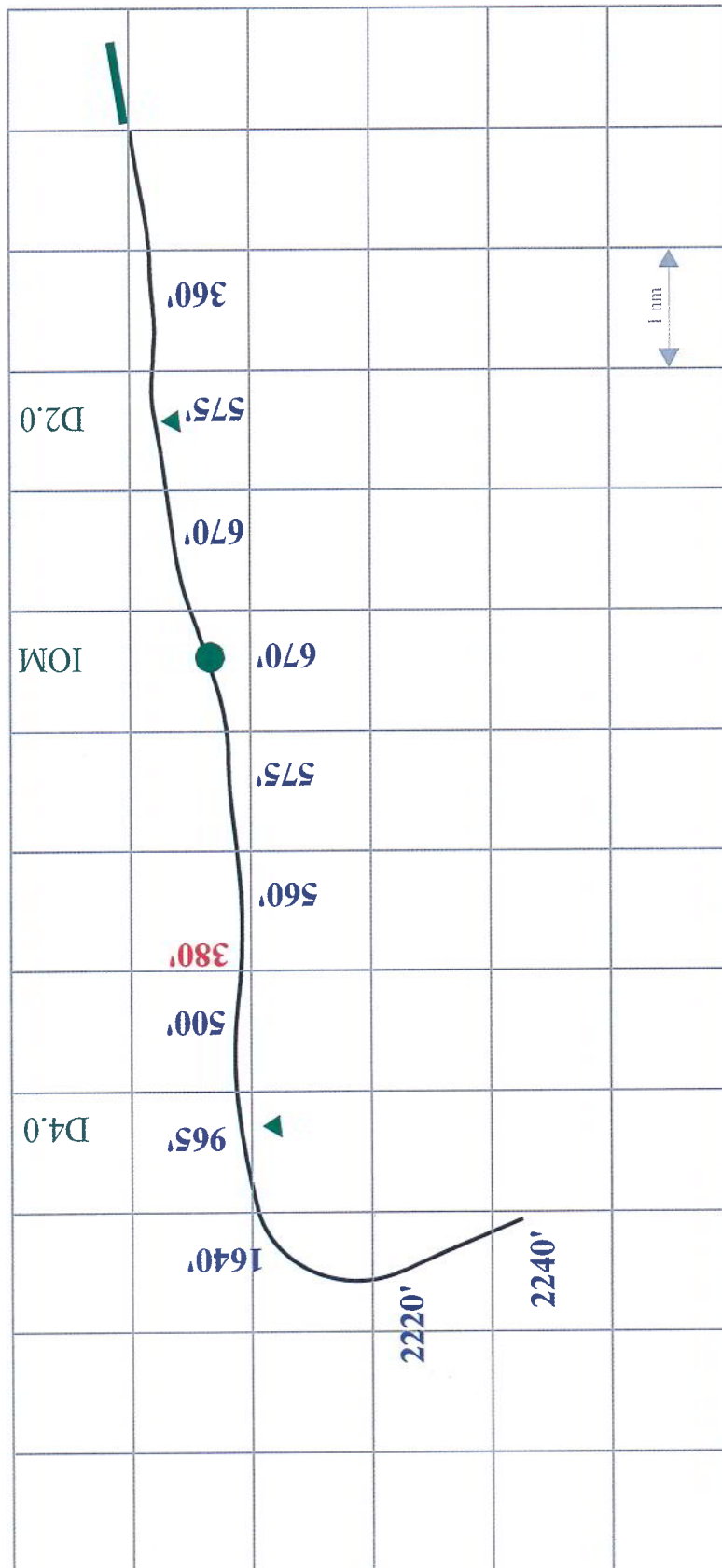


Figure 5 G-BGMO Approach and Landing

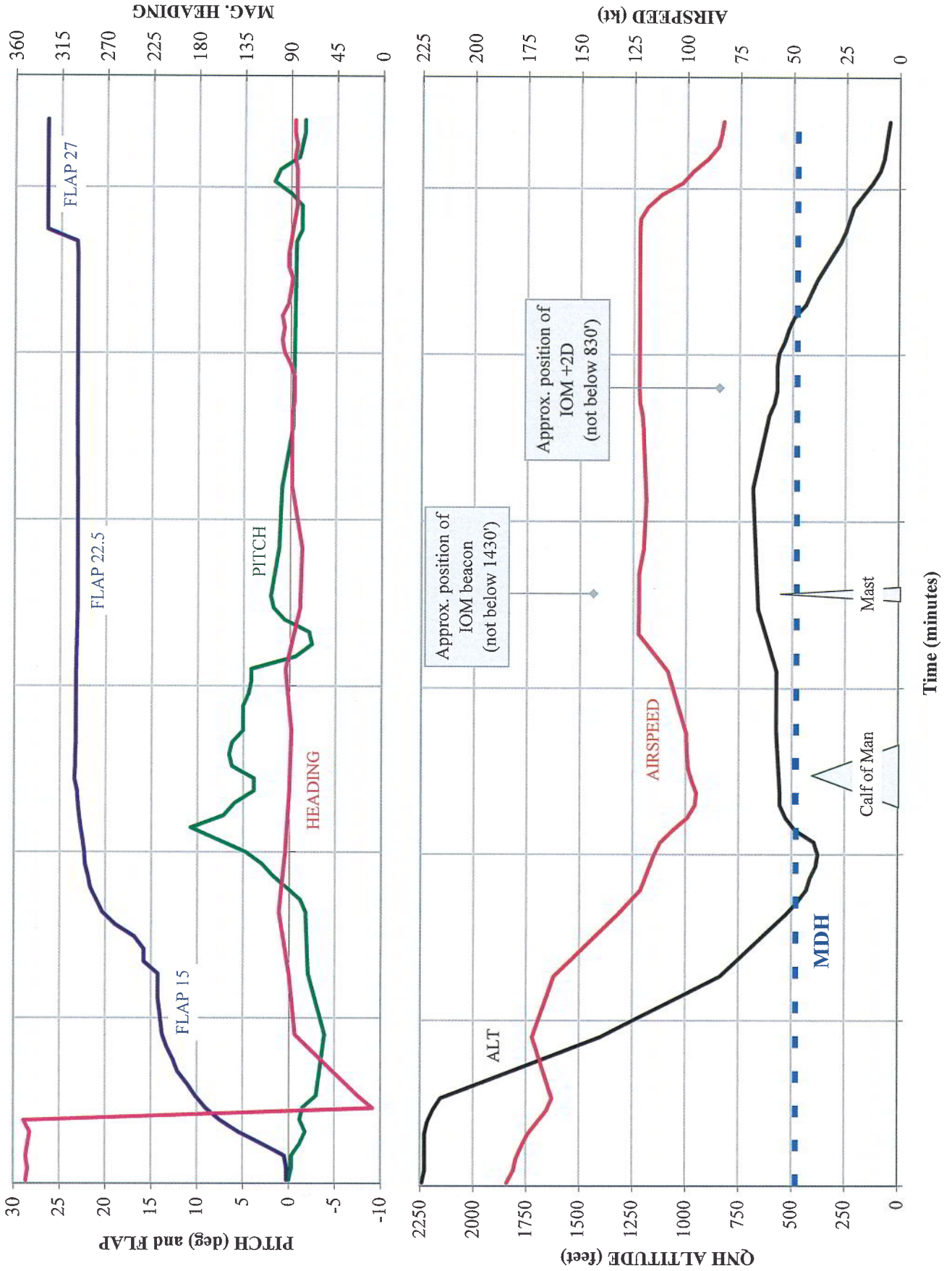
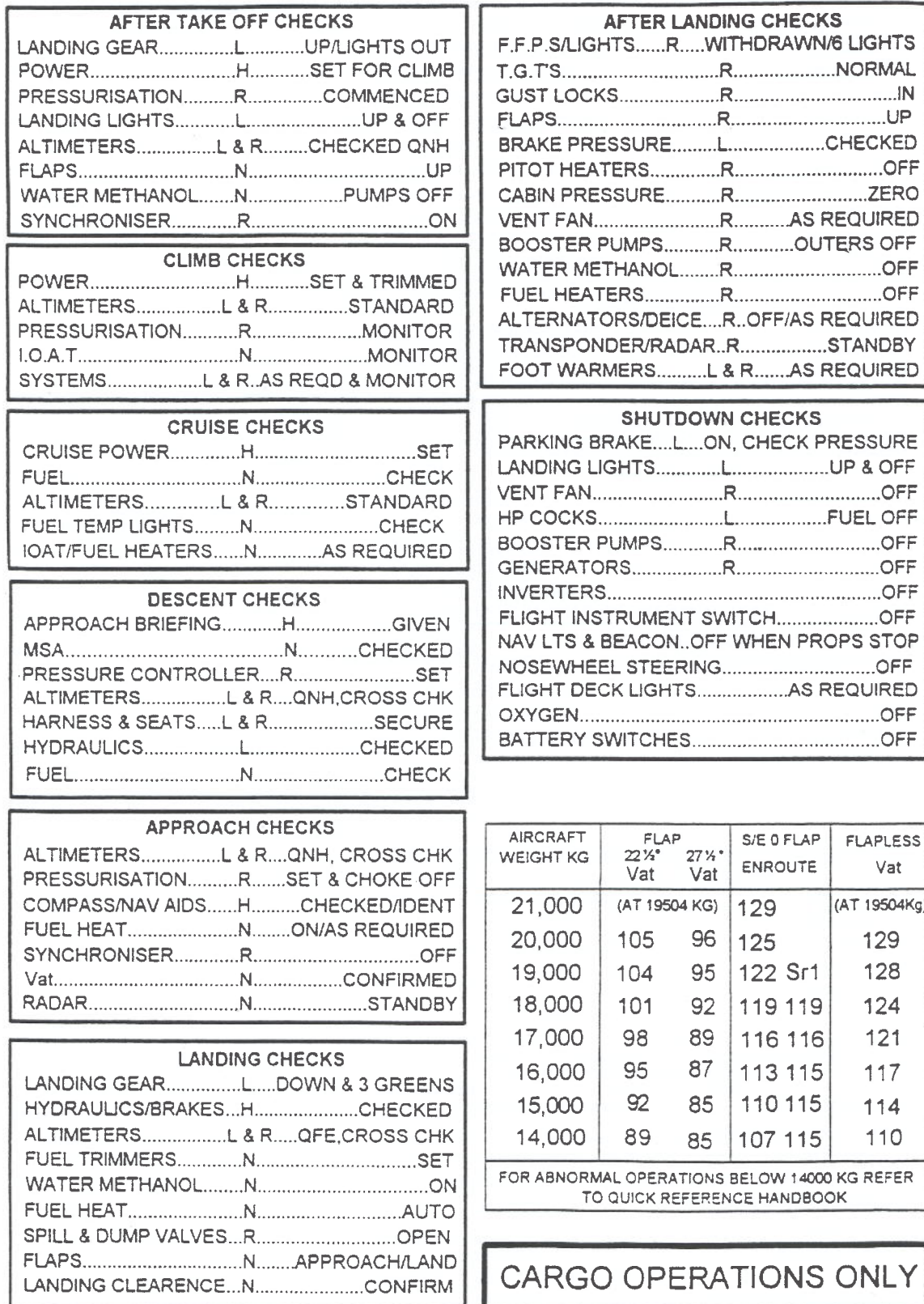


Figure 6 G-BGMO Approach and Landing



**Figure 1 NORMAL CHECKLIST  
CARGO AIRCRAFT (G-BIUV)**

AFTER TAKE-OFF CHECKS	
LANDING GEAR.....L.....	UP/LIGHTS OUT
POWER.....H.....	SET FOR CLIMB
PRESSURISATION.....R.....	COMMENCED
LANDING LIGHTS.....L.....	UP & OFF
ALTIMETERS.....L & R.....	CHECKED QNH
FLAPS.....N.....	UP
WATER METHANOL.....N.....	PUMPS OFF
SYNOCHRONISER.....R.....	ON
AUTOPILOT.....N.....	POWER ON
PRESSURE LOCKS.....H.....	REPORT RCVD
NOTICES.....R.....	AS REQUIRED

CLIMB CHECKS	
POWER.....H.....	SET & TRIMMED
ALTIMETERS.....L & R.....	STANDARD
PRESSURISATION.....R.....	CHECKED
I.O.A.T.....N.....	CHECKED
SYSTEMS.....L & R.....	CHECKED AS REQD

CRUISE CHECKS	
CRUISE POWER.....H.....	SET
FUEL.....N.....	CHECK
ALTIMETERS.....L & R.....	STANDARD
FUEL TEMP LIGHTS.....N.....	CHECK
IOAT/FUEL HEATERS.....N.....	AS REQUIRED

DESCENT CHECKS	
APPROACH BRIEFING.....H.....	GIVEN
MSA.....N.....	CHECKED
PRESSURE CONTROLLER.....R.....	SET
ALTIMETERS.....L & R.....	QNH,CROSS CHK
HARNES & SEATS.....L & R.....	SECURE
CABIN SEAT BELTS.....R.....	SIGN ON
HYDRAULICS.....L.....	CHECKED
FUEL.....N.....	CHECK

APPROACH CHECKS	
ALTIMETERS.....L & R.....	QNH, CROSS CHK
PRESSURISATION.....R.....	SET & CHOKE OFF
COMPASS/NAV AIDS.....H.....	CHECKED/IDENT
FUEL HEAT.....N.....	ON/AS REQUIRED
SYNCHRONISER.....R.....	OFF
Vat.....N.....	CONFIRMED
RADAR.....N.....	STANDBY

LANDING CHECKS	
LANDING GEAR.....L.....	DOWN & 3 GREENS
HYDRAULICS/BRAKES.....H.....	CHECKED
ALTIMETERS.....L & R.....	QFE,CROSS CHK
FUEL TRIMMERS.....N.....	SET
WATER METHANOL.....N.....	ON
FUEL HEAT.....N.....	AUTO
CABIN REPORT.....L.....	RECVD
FLAPS.....N.....	APPROACH/LAND
LANDING CLEARANCE.....N.....	CONFIRM
CABIN CREW PA.....H.....	SEATS FOR LANDING
AUTOPILOT.....H.....	DISCONNECT

AFTER LANDING CHECKS	
F.F.P.S/LIGHTS.....R.....	WITHDRAWN/6 LIGH.
T.G.T'S.....R.....	NORMA.
GUST LOCKS.....R.....	IN
FLAPS.....R.....	UP
BRAKE PRESSURE.....L.....	CHECKED
PITOT HEATERS.....R.....	OFF
SPILL VALVES.....R.....	MANUAL/OPEN
DUMP VALVE.....R.....	OPEN
VENT FAN.....R.....	AS REQUIRED
AC FAN.....R.....	AS REQUIRED
BOOSTER PUMPS.....R.....	OUTERS OFF
WATER METHANOL.....R.....	OFF
AUTO PILOT.....R.....	OFF
FUEL HEATERS.....R.....	OFF
ALTERNATORS/DEICE.....R.....	OFF
TRANSPONDER/RADAR.....R.....	STANDBY
FOOT WARMERS.....L & R.....	AS REQUIRED
LOAD SHEDDING SWITCH.....R.....	REDUCED
RAD ALT POWER.....R.....	OFF

SHUTDOWN CHECKS	
PARKING BRAKE.....L.....	ON, CHECK PRESSURE
LANDING LIGHTS.....L.....	UP & OFF
VENT FAN.....R.....	OFF
CABIN EMERG LIGHTS.....R.....	DISARM
HP COCKS.....L.....	FUEL OFF
BOOSTER PUMPS.....R.....	OFF
CABIN SEAT BELTS.....R.....	OFF
GENERATORS.....R.....	OFF
INVERTERS.....R.....	OFF
FLIGHT INSTRUMENT SWITCH.....R.....	OFF
NAV LTS/BEACON.....R.....	OFF WHEN PROPS STOP
NOSEWHEEL STEERING.....R.....	OFF
FLIGHT DECK LIGHTS.....R.....	AS REQUIRED
OXYGEN.....R.....	OFF
BATTERY SWITCHES.....R.....	OFF

AIRCRAFT WEIGHT KG	FLAP		S/E 0 FLAP ENROUTE	FLAPLESS Vat
	22 1/2° Vat	27 1/2° Vat		
21000	(AT 19504 Kg)		129	(AT 19504Kg)
20000	105	96	125	129
19000	104	95	122	128
18000	101	92	119	124
17000	98	89	116	121
16000	95	87	113	117
15000	92	85	110	114
FOR ABNORMAL OPERATIONS BELOW 15000 KG REFER TO QUICK REFERENCE HANDBOOK				

Figure 2 NORMAL CHECKLIST PASSENGER AIRCRAFT (G-BGMO)

**AFTER TAKE OFF CHECKS**  
 LANDING GEAR.....L&R.....UP/LIGHTS OUT  
 POWER.....H.....SET FOR CLIMB  
 PRESSURISATION.....R.....COMMENCED  
 LANDING LIGHTS.....L.....UP & OFF  
 ALTIMETERS.....L&R.....CHECKED QNH  
 FLAPS.....N.....UP  
 WATER METHANOL.....N.....PUMPS OFF  
 SYNCHRONISER.....R.....ON  
 AUTOPILOT.....N.....POWER ON

**CLIMB CHECKS**  
 POWER.....H.....SET & TRIMMED  
 ALTIMETERS.....L&R.....STANDARD  
 PRESSURISATION.....R.....CHECKED  
 IOAT.....N.....CHECKED  
 SYSTEMS.....L&R.....CHECKED AS REQD

**CRUISE CHECKS**  
 CRUISE POWER.....H.....SET  
 FUEL.....N.....CHECK  
 ALTIMETERS.....L&R.....STANDARD  
 FUEL TEMP LIGHTS.....N.....CHECK  
 IOAT/FUEL HEATERS.....N.....AS REQD

**DESCENT CHECKS**  
 APPROACH BRIEFING.....H.....GIVEN  
 MSA.....N.....CHECKED  
 PRESSURE CONTROLLER.....R.....SET  
 HARNESS & SEATS.....L&R.....SECURE  
 HYDRAULICS.....L.....CHECKED  
 FUEL.....N.....CHECK

**APPROACH CHECKS**  
 ALTIMETERS.....L&R.....QNH, CROSS CHK  
 PRESSURISATION.....R.....SET & CHOKE OFF  
 COMPASS/NAV AIDS.....L&R.....CHECKED/IDENT  
 FUEL HEAT.....N.....ONAS REQD  
 SYNCHRONISER.....R.....OFF  
 Vat.....N.....CONFIRMED  
 RADAR.....N.....STANDBY

**LANDING CHECKS**  
 LANDING GEAR.....L&R.....DOWN 3 GREENS  
 HYDRAULICS/BRAKES.....H.....CHECKED  
 ALTIMETERS.....L&R.....QFE, CROSS CHK  
 FUEL TRIMMERS.....N.....SET  
 WATER METHANOL.....N.....ON  
 FUEL HEAT.....N.....AUTO  
 FLAPS.....N.....APPROACH/LAND  
 SPILL & DUMP VALVES.....R.....OPEN  
 LANDING CLEARANCE.....N.....CONFIRM  
 AUTOPILOT.....H.....OFF

**AFTER LANDING CHECKS**  
 FFPS/LIGHTS.....N.....WITHDRAWN/6 LIGHTS  
 T.G.T'S.....N.....NORMAL  
 BRAKE PRESSURE.....L.....CHECKED

**TAXI SPEED ACHIEVED**  
 GUST LOCKS.....R.....IN  
 FLAPS.....R.....UP  
 PITOT HEATERS.....R.....OFF  
 CABIN PRESSURE.....R.....ZERO  
 DC FAN.....R.....AS REQUIRED  
 BOOSTER PUMPS.....R.....OUTERS OFF  
 WATER METHANOL.....R.....OFF  
 FUEL HEATERS.....R.....OFF  
 ALTERNATOR/DEICE.....R.....OFF/AS REQD  
 TRANSPONDER.....R.....STANDBY  
 FOOT WARMERS.....L&R.....AS REQUIRED

**SHUTDOWN CHECKS**  
 PARKING BRAKE.....L.....ON, CHECK PRESSURE  
 LANDING LIGHTS.....L.....UP & OFF  
 NOSEWHEEL STEERING.....L.....OFF  
 DC FAN.....R.....OFF  
 HP COCKS.....L.....FUEL OFF  
 BOOSTER PUMPS.....R.....OFF  
 GENERATORS.....R.....OFF  
 INVERTERS.....R.....OFF  
 FLIGHT INST SWITCH.....R.....OFF  
 BEACON.....R.....OFF WHEN PROPS STOP  
 FLIGHT DECK LIGHTS.....L&R.....AS REQD  
 OXYGEN.....L&R.....OFF  
 RADIO MASTER & RADAR.....L.....OFF  
 BATTERY SWITCHES.....R.....OFF

AIRCRAFT WEIGHT KG	FLAP		S/E 0 FLAPS ENROUTE	FLAPLESS Vat
	22 1/2 Vat	27 1/2 Vat		
21,000	(@ 19504 kg)		129	(@ 19504 kg)
20,000	105	96	125	129
19,000	104	95	122 Sr1	128
18,000	101	92	119 119	124
17,000	98	89	116 116	121
16,000	95	87	113 115	117
15,000	92	85	110 115	114
14,000	89	85	107 115	110

FOR ABNORMAL OPERATIONS BELOW 14000 KG REFER TO QUICK REFERENCE HANDBOOK

**CARGO AIRCRAFT**

Figure 3 REVISED NORMAL CHECKLIST (CARGO AIRCRAFT)

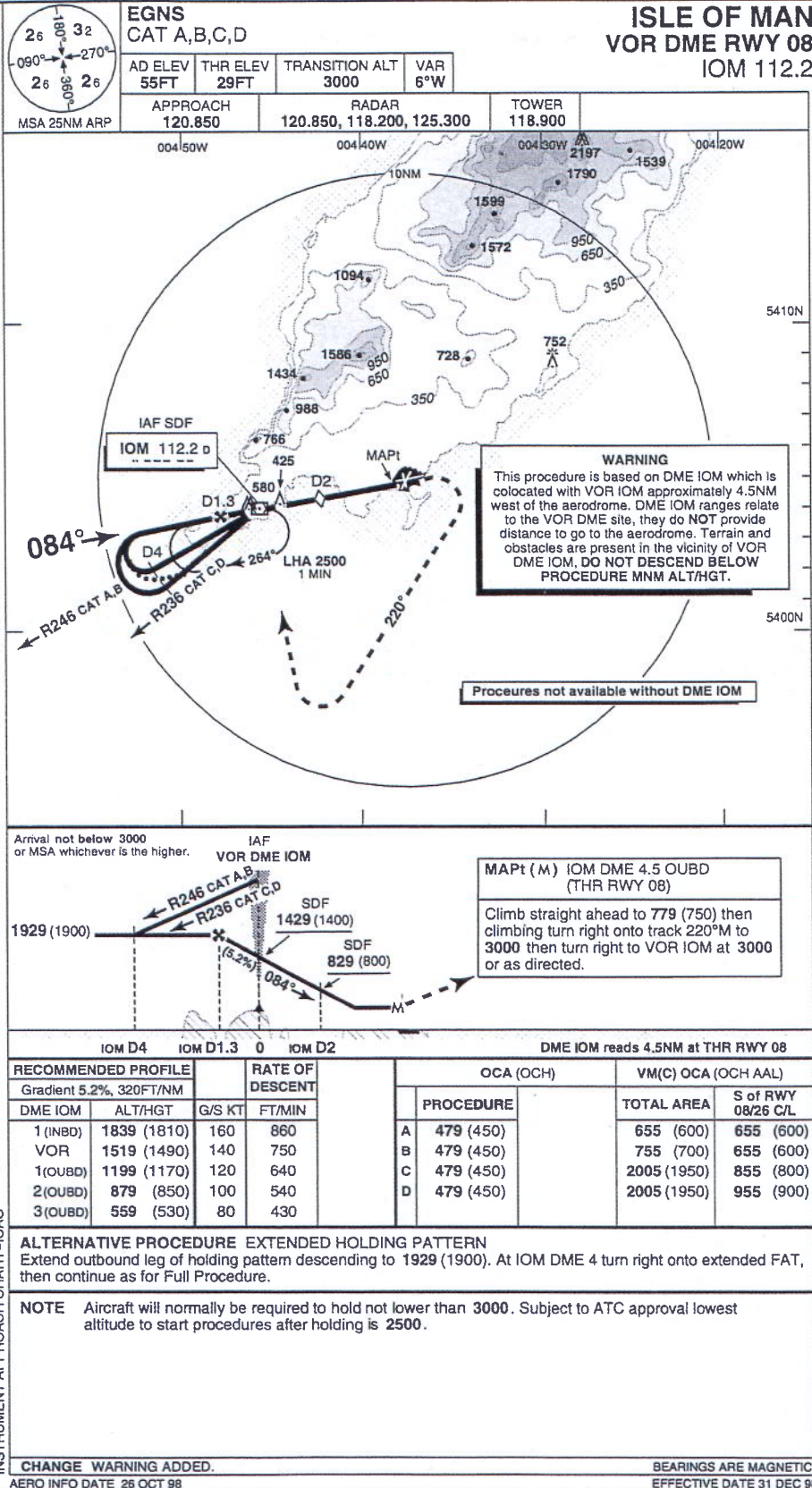
<p><b>AFTER TAKE-OFF CHECKS</b></p> <p>LANDING GEAR..... L&amp;R..... UP/LIGHTS OUT                  POWER..... H..... SET FOR CLIMB                  PRESSURISATION..... R..... COMMENCED                  LANDING LIGHTS..... L..... UP &amp; OFF                  ALTIMETERS..... L&amp;R..... CHECKED QNH                  FLAPS..... N..... UP                  WATER METHANOL..... N..... PUMPS OFF                  SYNCHRONISER..... R..... ON                  AUTOPILOT..... N..... POWER ON                  PRESSURE LOCKS..... L..... REPORT RCVD</p>		<p><b>AFTER LANDING CHECKS</b></p> <p>FFPS/LIGHTS..... N..... WITHDRAWN/6 LIGHTS                  T.G.T'S..... N..... NORMAL                  BRAKE PRESSURE..... L..... CHECKED</p>	
<p><b>CLIMB CHECKS</b></p> <p>POWER..... H..... SET &amp; TRIMMED                  ALTIMETER..... L&amp;R..... STANDARD                  PRESSURISATION..... R..... CHECKED                  IOAT..... N..... CHECKED                  SYSTEMS..... L&amp;R..... CHECKED AS REQD                  CABIN SEAT BELTS..... L&amp;R..... AS REQD</p>		<p><b>TAXY SPEED ACHIEVED</b></p> <p>GUST LOCKS..... R..... IN                  FLAPS..... R..... UP                  PITOT HEATERS..... R..... OFF                  SPILL VALVE..... R..... MANUAL/OPEN                  DUMP VALVE..... R..... OPEN                  DC FAN..... R..... AS REQD                  AC FAN..... R..... AS REQD                  BOOSTER PUMPS..... R..... OUTERS OFF                  WATER METHANOL..... R..... OFF                  FUEL HEATERS..... R..... OFF                  ALTERNATOR/DEICE..... R..... OFF                  TRANSPONDER..... R..... STANDBY                  FOOT WARMERS..... L&amp;R..... AS REQD                  LOAD REDUCTION SWITCH..... R..... REDUCED                  RAD ALT POWER..(2B)..... R..... OFF                  CABIN PRESSURE..... R..... ZERO</p>	
<p><b>CRUISE CHECKS</b></p> <p>CRUISE POWER..... H..... SET                  FUEL..... N..... CHECK                  ALTIMETERS..... L&amp;R..... STANDARD                  FUEL TEMP LIGHTS..... N..... CHECK                  IOAT/FUEL HEATERS..... N..... AS REQD                  CABIN SEAT BELTS..... L&amp;R..... AS REQD</p>		<p><b>SHUTDOWN CHECKS</b></p> <p>PARKING BRAKE..... L..... ON, CHK PRESSURE                  LANDING LIGHTS..... L..... UP &amp; OFF                  NOSEWHEEL STEERING..... L..... OFF                  DC FAN..... R..... OFF                  HP COCKS..... L..... FUEL OFF                  CABIN EMERG LIGHTS..... R..... DISARM                  BOOSTER PUMPS..... R..... OFF                  CABIN SEAT BELTS..... R..... OFF                  GENERATORS..... R..... OFF                  INVERTERS..... R..... OFF                  FLT INST SWITCH..... R..... OFF                  BEACON..... R..... OFF WHEN PROPS STOP                  FLIGHT DECK LIGHTS..... L&amp;R..... AS REQD                  OXYGEN..... L&amp;R..... OFF                  RADIO MASTER &amp; RADAR..... L..... OFF                  BATTERY SWITCHES..... R..... OFF</p>	
<p><b>DESCENT CHECKS</b></p> <p>APPROACH BRIEFING..... H..... GIVEN                  MSA..... N..... CHECKED                  PRESSURE CONTROLLER..... R..... SET                  HARNESS &amp; SEATS..... L&amp;R..... SECURE                  CABIN SEAT BELTS..... R..... SIGN ON                  HYDRAULICS..... L..... CHECKED                  FUEL..... N..... CHECK</p>			
<p><b>APPROACH CHECKS</b></p> <p>ALTIMETERS..... L&amp;R..... QNH, CROSS CHK                  PRESSURISATION..... R..... SET &amp; CHOKE OFF                  COMPASS/NAV AIDS..... L&amp;R..... CHECKED/IDENT                  FUEL HEAT..... N..... ON/AS REQD                  SYNCHRONISER..... R..... OFF                  Val..... N..... CONFIRMED                  RADAR..... N..... STANDBY</p>			
<p><b>LANDING CHECKS</b></p> <p>LANDING GEAR..... L&amp;R..... DOWN 3 GREENS                  HYDRAULICS/BRAKES..... H..... CHECKED                  ALTIMETERS..... L&amp;R..... QFE, CROSS CHK                  FUEL TRIMMERS..... N..... SET                  WATER METHANOL..... N..... ON                  FUEL HEAT..... N..... AUTO                  FLAPS..... N..... APPROACH/LAND                  CABIN REPORT..... L..... RECVD                  LANDING CLEARANCE..... N..... CONFIRM                  CABIN CREW PA..... H..... SEATS FOR LAND                  AUTOPILOT..... H..... OFF</p>			

AIRCRAFT WEIGHT KG	FLAP		S/E 0 FLAP ENROUTE	FLAPLESS V <sub>ref</sub>
	22 1/2 Val	27 1/2 Val		
21,000	(@ 19504 kg)		129	(@ 19504 kg)
20,000	105	96	125	129
19,000	104	95	122	128
18,000	101	92	119	124
17,000	98	89	116	121
16,000	95	87	113	117
15,000	92	85	110	114

FOR ABNORMAL OPERATIONS BELOW 15000 KG REFER TO QUICK REFERENCE HANDBOOK

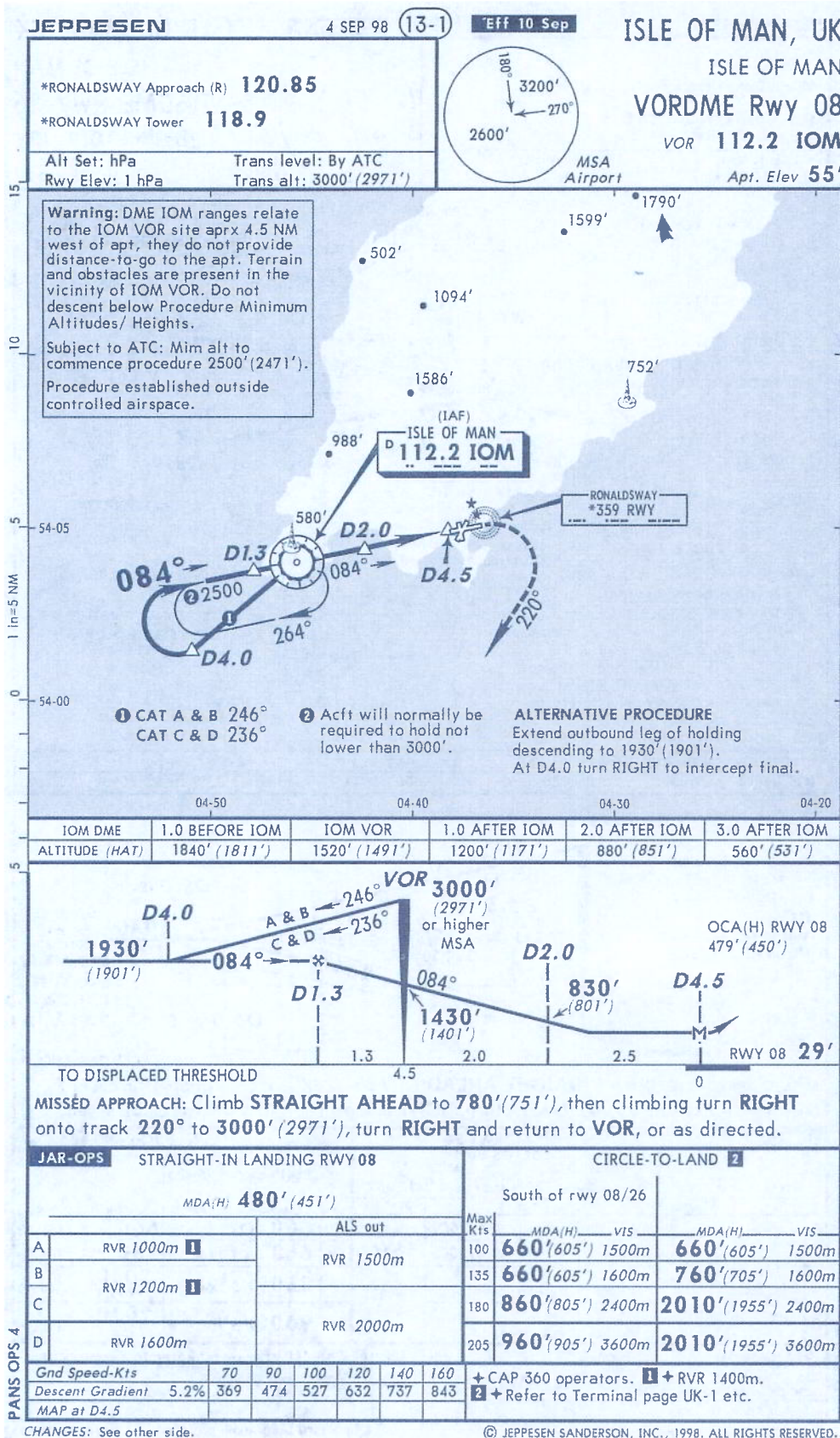
**PASSENGER AIRCRAFT**

Figure 4 REVISED NORMAL CHECKLIST (PASSENGER AIRCRAFT)



**Isle of Man VOR/DME 08 Revised Approach Procedure  
CAA AIP Chart**

(Not for navigational purposes - information only)



**Isle of Man VOR/DME 08 Revised Approach Procedure  
 Jeppesen Chart**

(Not for navigational purposes - information only)  
 (Reproduced with permission of Jeppesen GmbH)