

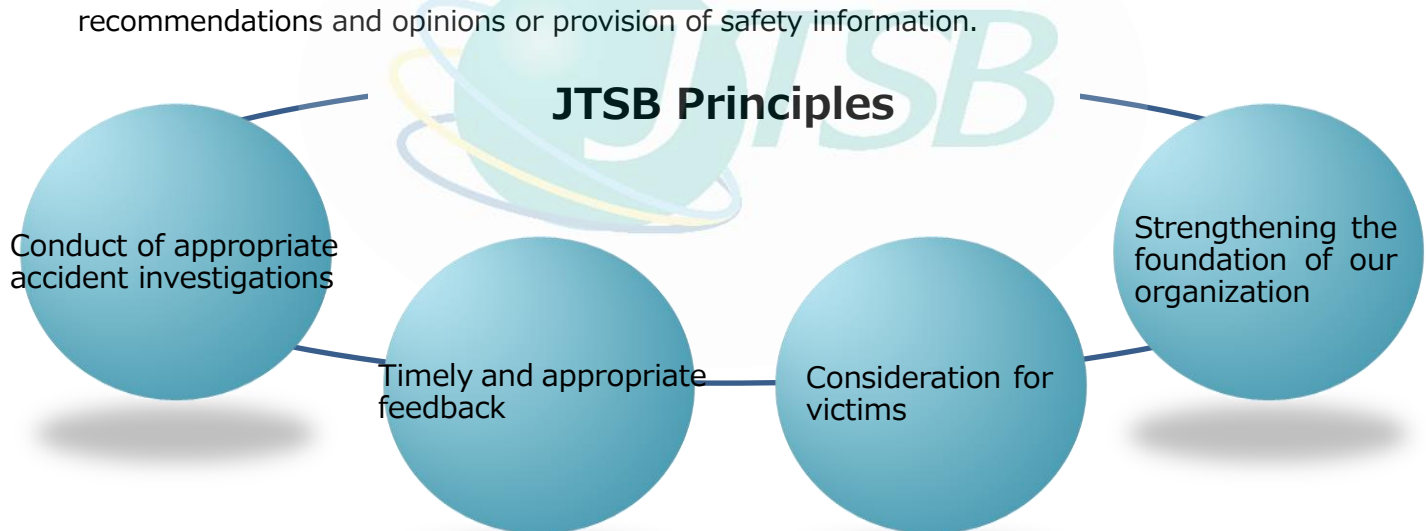


Safety investigation into the causes of aircraft, railway and marine accidents/incidents, and the prevention of their recurrence

JTSB Mission

We contribute to

- preventing the occurrence of accidents and
 - mitigating the damage caused by them,
- thus improving transport safety while raising public awareness, and thereby protecting the people's lives by
- accomplishing appropriate accident investigations which thoroughly unveil the causes of accidents and damages incidental to them, and
 - urging the implementation of necessary policies and measures through the issuance of safety recommendations and opinions or provision of safety information.



History

Jun. 1949 Establishment of Japan Marine Accident Inquiry Agency (JMAIA)

Aircraft Accident

- Jul. 1971** Crash of a Toa Domestic Airlines aircraft in Mt. Yokotsudake, north of Hakodate, 68 fatalities
- Jul. 1971** Midair collision between an All Nippon Airways aircraft and a Self-Defense Forces aircraft in Shizuku-ishi Town, Iwate Prefecture, 162 fatalities

Jan. 1974 Establishment of Aircraft Accidents Investigation Commission

Railway Accident

- May 1991** Collision between a Shigaraki Kougen Railway passenger train and a West Japan Railway (JR-West) passenger train, 42 fatalities and 628 injuries
- Mar. 2000** Derailment and collision of Teito Rapid Transit Authority passenger trains on the Hibiya Subway Line, 5 fatalities and 64 injuries

Oct. 2001 Establishment of Aircraft and Railway Accidents Investigation Commission (ARAIC)

Railway Accident

- Apr. 2005** Derailment of a JR-West passenger train on the Fukuchiyama Line, 107 fatalities and 562 injuries

Mar. 2006

The supplementary diet resolution in 2006 amendment of the related laws (Expansion of the scope of work in accident investigations, as well as the enhancement of the system and the functions)

May 2008

Amended International Convention for the Safety of Life at Sea (SOLAS) was adopted (separation of the investigation to identify causes in a marine accident from any proceeding to apportion blame or liability)
Entry into force in January 2010

Oct. 2008 Establishment of Japan Transport Safety Board

...Merging of ARAIC with the cause-identification part of JMAIA

Investigation Procedure

The JTSB conducts investigations to determine the causes of aircraft, railway and marine accidents, serious incidents*¹ and damage caused by the accidents. Based on the findings of the accident investigations, the JTSB provides recommendations or opinions to heads of relevant administrative organs or parties relevant to the causes, concerning the measures to be taken to prevent the recurrence of accidents and to mitigate damage caused by the accidents.

Appointment of investigators and fact-finding investigation

Interview with persons concerned / Examination of physical evidence / Collection of related materials



Aircraft Accident Investigators



Railway Accident Investigators



Marine Accident Investigators
Regional Investigators

* Investigate serious marine accidents
* Investigate marine accidents (excluding serious accidents) within their jurisdiction

Tests, research and analyses



Analyses of Flight Data Recorder



Analyses of Cockpit Voice Recorder



Analyses of Voyage Data Recorder

Deliberation of the Board



Deliberation of the Board

Comments by the parties relevant to the causes

Comments from the participating States

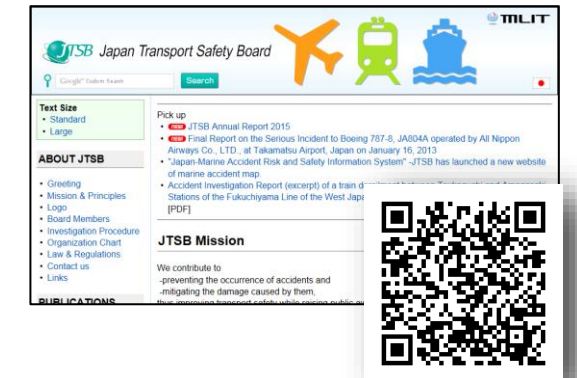
Adoption by the Board

Submission to the Minister of Land, Infrastructure, Transport and Tourism

[When deemed necessary]

Publication of the investigation report

Reports on the website



Opinion*³

Recommendation*⁴

Safety Recommendation*⁵

Implementation of preventive measures/actions

Follow-up on implementation of preventive measures/actions taken

Provision of factual information to relevant administrative organs*²

Relevant administrative organs

Implementation of safety measures

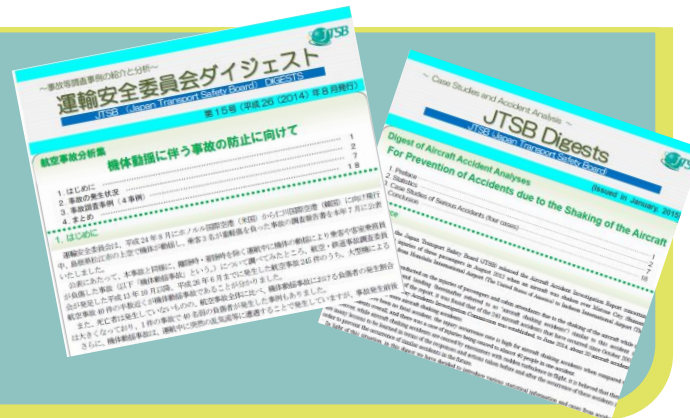
*¹ "Serious incidents" (In the case of marine, "Incidents") are situations deemed to bear the risk of accidents occurring
 *² Provision of factual information to relevant administrative organs... On finding out an urgent, unsafe issue in the process of an accident investigation, the JTSB immediately gives information to relevant administrative organs.
 *³ Opinion... Not only for issues raised from an investigation result, the JTSB also states opinions when deemed necessary on preventive measures to the Minister of Land, Infrastructure, Transport and Tourism or heads of relevant administrative organs in the process of the investigation or based on findings from similar accidents in the past in order to prevent the recurrence of accidents or mitigate the damage.
 *⁴ Recommendation... The JTSB recommends the Minister of Land, Infrastructure, Transport and Tourism/parties relevant to the causes to take preventive measures/actions in order to prevent the recurrence of accidents or mitigate the damage based on the completed accident investigation. The Minister of Land, Infrastructure, Transport and Tourism shall report the preventive measures on the basis of recommendation to the JTSB. The JTSB may, when the parties relevant to the accident have not taken any measures in accordance with the recommendation without justifiable grounds, make it public to that effect.
 *⁵ Safety Recommendation... In the event of the occurrence of an aircraft or marine accident, the JTSB recommends relevant foreign organs and/or persons concerned to take preventive actions that it considers necessary to be taken promptly to enhance safety at any stage of the accident investigation on the basis of international convention.

Dissemination of Information from JTSB

JTSB Digests

With the aim of fostering awareness of safety, and preventing similar accidents from occurring, we issue "JTSB Digests." This publication introduces you to statistics-based analyses and must-know cases of accidents.

We also issue the English version of "JTSB Digests" as part of our efforts to disseminate information overseas.



Japan-Marine Accident Risk and Safety Information System (J-MARISIS)

In order to further enhance the safety of maritime transport, the J-MARISIS is provided on the website to display information on accidents and risk information on a map interface.

A global version that enables the search of investigation reports by accident investigation authorities overseas, as well as a mobile version for smartphones and tablets, are also available for use.

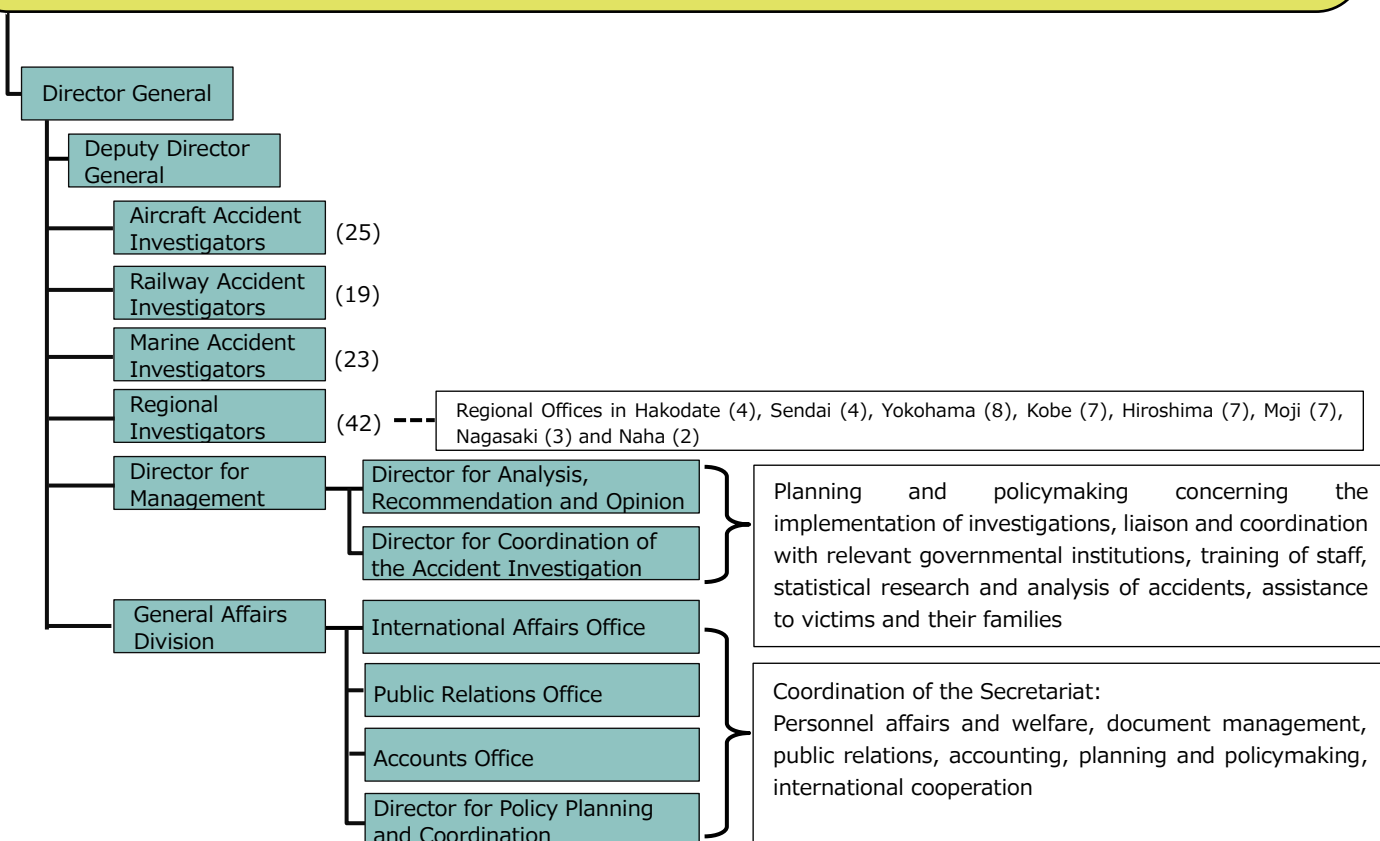


Organization

※The numbers in parentheses are the prescribed number of staff members as of the end of fiscal year 2018

Japan Transport Safety Board

Chairman (1) Expertise: Aerospace engineering/Computational fluid dynamics
 Members (Full-time, 7) Expertise: Legislation, Operation and maintenance of aircraft, Maneuvering of aircraft, Railway/Geotechnical engineering, Dynamics of machinery/Vehicle dynamics/Railway vehicle engineering, Ship operation/Maritime traffic safety, Naval architect
 Members (Part-time, 5) Expertise: Flight simulation/Flight dynamics, Ergonomics(Human factors), Structural engineering, Electrical engineering/Traffic management(Human interface), Ergonomics



Activities of JTSB

International activities

International organizations are involved in the development and operation of systems for investigating aircraft and marine accidents. In conducting such investigations, the cooperation and collaboration of accident investigation authorities of the relevant states is required.

In addition to facilitating smooth cooperation and collaboration with other states, various international conferences are also organized in order to enhance the effectiveness of measures to prevent the recurrence of accidents, such as by sharing information on accidents and investigation methods. The Japan Transport Safety Board participates in these conferences actively.



Outreach lectures

Outreach lectures are conducted to broadly convey and communicate information about the work carried out by the Japan Transport Safety Board and to create an opportunity for collecting honest opinions and feedback from the general public.

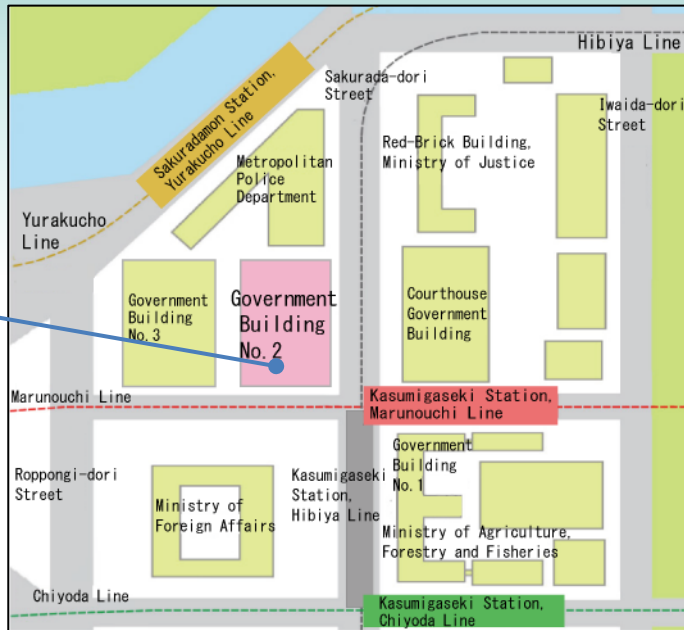
Members of the staff are dispatched to schools and various seminars as lecturers to conduct sessions on contents that are useful for preventing and mitigating damage from aircraft, railway, and marine accidents. Please refer to the website of the Japan Transport Safety Board for application procedures.

<http://www.mlit.go.jp/jtsb/demaekouza.html>





Japan Transport Safety Board
 2-1-2, Kasumigaseki, Chiyoda-ku,
 Tokyo, 100-8918, Japan
 Tel: +81-3-5253-8486
 E-mail: jtsb@mlit.go.jp
 URL: <http://www.mlit.go.jp/jtsb/english.html>



Regional Offices and Jurisdictions

(The jurisdictions are divided only for the investigation of marine accidents/incidents)

Hakodate Office

24-4, Kaigan-cho, Hakodate city, Hokkaido,
 040-0061, Japan
 Tel: +81-138-43-5517

Sendai Office

1-3-15, Gorin, Miyagino-ku, Sendai city, Miyagi,
 983-0842, Japan
 Tel: +81-22-295-7313

Yokohama Office

5-57, Kitanaka-dori, Naka-ku, Yokohama city,
 Kanagawa, 231-0003, Japan
 Tel: +81-45-201-8396

Kobe Office

1-1, Hatoba-cho, Chuo-ku, Kobe city, Hyogo,
 650-0042, Japan
 Tel: +81-78-331-7258

Hiroshima Office

3-10-17, Ujinakaigan, Minami-ku, Hiroshima city,
 Hiroshima, 734-0011, Japan
 Tel: +81-82-251-4603

Moji Office

1-3-10, Nishikaigan, Moji-ku, Kitakyushu city,
 Fukuoka, 801-0841, Japan
 Tel: +81-93-331-3707

Nagasaki Office

7-29, Matsugae-machi, Nagasaki city, Nagasaki,
 850-0921, Japan
 Tel: +81-95-821-3537

Naha Office

2-11-1, Minato-machi, Naha city, Okinawa,
 900-0001, Japan
 Tel: +81-98-868-9335



~Assistance to victims and their families, or the bereaved~

JTSB provides information on accident investigations for victims and their families, or the bereaved and responds to their voices. Please do not hesitate to contact us.

Victims and their Families Liaison Office
 Japan Transport Safety Board Secretariat
 E-Mail: jtsb_faminfo@mlit.go.jp